



KRAL ARMS

K410

USER MANUAL

36 Ga (.410) Semi Automatic Shotgun

READ CAREFULLY BEFORE USING THIS FIREARM IMPORTANT!

Do not discard! Keep this manual with your rifle. It should accompany the rifle to any new owner.

www.kralarms.com





OWNER'S RECORD

MODEL:KRAL ARMS K410 – SERIAL # _____

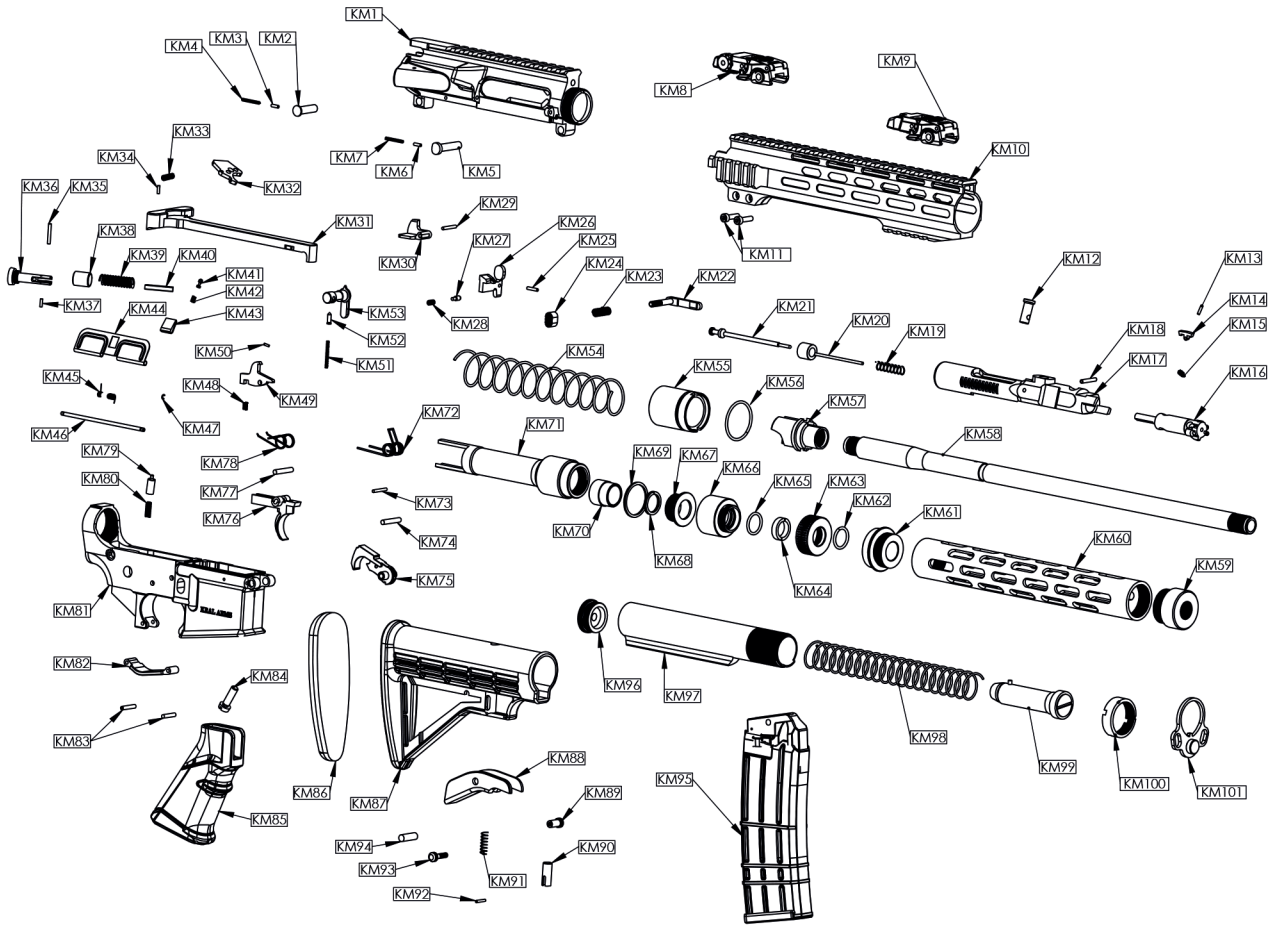
D A T E DATE OF PURCHASE.....

WORKING PRINCIPLE OF THIS SEMI-AUTOMATIC SHOTGUN

This is a semi-automatic, magazine fed shotgun on caliber.410 (36 gauge). It works with help of a piston and pressure of combustion gases. These gases push the slide mechanism backwards when fired. The slide takes the rotating head within backwards while pushing its bolt holders apart. The rotating head will eject the used shell out of the ejection port. The main spring in the mechanism takes an unused shell from the magazine while returning to its resting place and puts it in the chamber. This process is repeated with every single trigger pull as long as live and healthy ammunition is present in the magazine.



EXPLODED VIEW



PARÇA LİSTESİ

KM1	UPPER BODY	KM26	BOLT CATCH	KM52	SAFETY SELECTOR PIN	KM78	TRIGGER SPRING
KM2	UPPER BODY REAR FIXING	KM27	BOLT CATCH PIN	KM53	SAFETY SELECTOR	KM79	MAIN TUBE FIXING
KM3	UPPER BODY REAR FIXING PIN	KM28	BOLT CATCH SPRING	KM54	BUFFER SPRING	KM80	MAIN TUBE FIXIN SPRING
KM4	UPPER BODY REAR FIXING SPRING	KM29	DROPPER PIN	KM55	BARREL HOUSING	KM81	LOWER RECEIVER
KM5	UPPER BODY FRONT FIXING	KM30	DROPPER	KM56	BARREL HOUSING O-RING	KM82	TRIGGER GUARD
KM6	UPPER BODY FRONT FIXING PIN	KM31	CHARGING HANDLE	KM57	BARREL END CAP	KM83	TRIGGER GUARD PINS
KM7	UPPER BODY FRONT FIXING SPRING	KM32	CHARGING HANDLE LATCH	KM58	BARREL	KM84	PISTOL GRIP SCREW
KM8	REAR SIGHT ASSEMBLY	KM33	CHARGING HANDLE LATCH SPRING	KM59	BARREL SHROUD FRONT CAP	KM85	PISTOL GRIP
KM9	FRONT SIGHT ASSEMBLY	KM34	CHARGING HANDLE LATCH PIN	KM60	BARREL SHROUD	KM86	BUTT PAD
KM10	FOREND	KM35	FORWARD ASSIST PIN	KM61	BARREL SHROUD END CAP	KM87	TACTICAL BUTTSTOCK
KM11	FOREND FIXING SCREWS	KM36	FORWARD ASSIST	KM62	BARREL SHROUD END CAP O-RING	KM88	TELESCOPING LATCH
KM12	MECHANISM CHANNEL PIN	KM37	FORWARD ASSIST VERTICAL PIN	KM63	GAS CHAMBER CENTERING PART	KM89	TELESCOPING NUT
KM13	EXTRACTOR PIN	KM38	FORWARD ASSIST SPRING HOUSING	KM64	GAS CHAMBER SNAP RING	KM90	TELESCOPING NUT HOUSING
KM14	EXTRACTOR	KM39	FORWARD ASSIST SPRING	KM65	GAS CHAMBER O-RING	KM91	TELESCOPING SPRING
KM15	EXTRACTOR SPRING	KM40	FORWARD ASSIST HORIZONTAL PIN	KM66	GAS CHAMBER	KM92	TELESCOPING HOUSING PIN
KM16	ROTATING HEAD ASSEMBLY	KM41	EJECTION PORT PIVOT PIN	KM67	GAS CHAMBER RING COVER	KM93	TELESCOPING SCREW
KM17	SLIDE BODY	KM42	EJECTION PORT PIVOT PIN SPRING	KM68	GAS CHAMBER RING	KM94	TELESCOPING PIN
KM18	NEEDLE FIXING PIN	KM43	EJECTION PORT BODY	KM69	GAS CHAMBER OUTER RING	KM95	MAGAZINE
KM19	EJECTOR SPRING	KM44	EJECTION PORT	KM70	GAS CHAMBER INNER RING CENTERING PART	KM96	TELESCOPING TUBE END CAP,
KM20	EJECTOR	KM45	EJECTION PORT SPRING	KM71	UPPER RECEIVER	KM97	TELESCOPING TUBE
KM21	FIRING PIN	KM46	EJECTION PORT PIN	KM72	HAMMER SPRING	KM98	BUTTSTOCK SPRING
KM22	MAGAZINE CATCH	KM47	EJECTION PORT SNAP RING	KM73	HAMMER PIN	KM99	BUTTSTOCK SPRING GUIDE
KM23	MAGAZINE CATCH SPRING	KM48	TRIGGER SPRING	KM74	HAMMER LOWER RECEIVER PIN	KM100	BUTTSTOCK END RING
KM24	MAGAZINE CATCH BUTTON	KM49	DISCONNECTOR	KM75	HAMMER	KM101	SWIVEL
KM25	BOLT CATCH PIN	KM50	EJECTION PORT LATCH PIN	KM76	TRIGGER		
		KM51	SAFETY SPRING	KM77	TRIGGER LOWER RECEIVER PIN		

LOADING AND UNLOADING

- A. **Loading shell to the magazine**
The proper ammunition for both the type of shooting and for the shotgun should be loaded to magazine one by one by while pushing the follower down.
- B. **Chambering a round from the magazine**
After ensuring the safety is engaged, pull the bolt handle to yourself all the way and the release it.
- C. **Taking shell out from the chamber without firing (unloading)**
Take the magazine out by pushing on the magazine catch button and slide the magazine out. If a round is in the chamber, pull the charging handle all the way back and release. The unused shell will come out from the ejection port.

IMPORTANT: REMEMBER TO ENGAGE THE SAFETY BEFOREHAND. DISENGAGE IT ONLY WHEN READY TO FIRE!



DISASSEMBLY FOR CLEANING AND MAINTAINING PURPOSES

A. Taking the forend out

To remove the forend, take out the allen screws shown in the picture

B. Dismantling the piston

After removing the forend, rotate the piston counter-clockwise.

Use Standardized shells. Do not use reloaded or otherwise unsuitable shells.

C. Taking the upper and lower receivers apart

Take the body fixing pin out and pivot the front part forward.

D. Separate the housing into two parts by removing the housing fixing pins. Remove the mechanism from the inside of the housing by pulling the winding lever.



GENERAL SAFETY RULES

Please read and understand the contents of this manual before using your gun. Misuse of this gun in an unsafe manner can result in injury and/or death. Following these safety rules is the biggest indicator of you owning this gun.

Never point your gun to an unsafe direction.

- A. Even if you think the gun is unloaded, do not point your gun to any direction you do not intend to harm. Know what is behind your target. Always point your gun to a safe direction.



Always assume the gun is loaded.

- B. Always check the gun to see if it was unloaded when first handling. Remember to point your gun to a safe direction when loading and unloading.



Store your gun in a place where unauthorized persons and minors can not access.

- C. To minimize the risk of accidents, store your gun separately from its ammunition. Keep your gun out of reach of people under 18.



Never shoot at water or any other hard surface.

- D. Shooting at water, rock or any other hard surfaces increases the risk of the projectile reducing to shards and ricocheting this may cause the unintended damage on or around the target.



Execute the proper safety rules when using your gun.

- E. Do not rely on any mechanical safety device to avoid accidental discharges. Exercise the rules for transporting and storing your gun safely. These rules are there to ensure your and other's safety.

Clean and maintain your gun regularly.

- F. After every use, disassemble your gun according to the instructions on your manual and clean and oil the necessary parts.



GENERAL SAFETY RULES

Use approved and proper ammunition.

- G. Prefer CIP approved ammunition. Defected shells can cause injuries as well as mechanical problems.

Use protective glasses and ear protection during shooting.

- H. Use ear protection to avoid hearing loss during shooting. The exposure to the combustion gases and/or shrapnel from ammunition may cause harm to the shooter. Always use eye and ear protection.

Do not shoot under influence

- I. Do not use your gun under the influence of alcohol, prescription drugs and/or when fatigued. These could impair judgement and reflexes and result in harm.

Do not try to jump any obstacle while handling a loaded gun.

- J. Do not climb a tree while you are handling a loaded gun. Unload your gun when you have to climb over an obstacle. Do not use your gun to take support from it when you are in a challenging position

K) Do not board any vehicle with a loaded gun.

- K. Unload your gun when boarding a vehicle. Load your gun only before target shooting or hunting. This will help you prevent any accidental discharge.





For international dealers please visit:
www.kralarms.com

Follow Us on:

