



KRAL ARMS

XPS / XPS TACTICAL COMPACT

USER MANUAL

12G MAGAZINE FED SHOTGUN

READ CAREFULLY BEFORE USING THIS FIREARM IMPORTANT!

Do not discard! Keep this manual with your rifle. It should accompany the rifle to any new owner.

www.kralarms.com



SHOTGUN OWNERSHIP CERTIFICATE

MODEL: _____ SERIAL: _____ DATE OF PURCHASE _____

MAINTENANCE AND STORAGE OF YOUR KRAL SHOTGUN

1) DO NOT MAKE ANY REPAIRS OR MODIFICATIONS ON THE GUN

This shotgun has been produced in accordance with certain instructions. Modifications of any systems under ANY circumstances is not allowed. Modifications of systems like trigger, mechanisms, safety systems are NOT RECOMMENDED, since this may cause injury or death to either you or any bystander unless these parts are supplied in the original box of the gun. Also any modification performed on the gun will void the warranty.

2) PROPER MAINTENANCE AND STORAGE

Regular maintenance and cleaning is crucial in order to keep your shotguns effectiveness, functionality and durability. Before starting to clean your gun, ALWAYS make sure it is empty.

CONGRATULATIONS!

You now own a KRAL Shotgun. Your gun has an innovative design and was produced with superior quality materials. With regular maintenance and proper ammunition usage, KRAL Shotgun will serve you well over the coming years. To ensure you receive the most from your KRAL Shotgun, please make sure to read and understand the warnings and instructions within this manual. This shotgun is completely safe unless it was handled with a manner of carelessness and irresponsibility. **DO NOT FORGET THAT IT IS AN INEVITABLE OBLIGATION OF THE OWNER KNOW OFF THE IMPORTANCE OF PROPER GUN SAFETY RULES AND REGULATIONS AND BE COMPLETELY EDUCATED IN THE TOPIC.**

You must know and understand all the mechanisms, machanical safety precautions, their functions and operations before loading the gun with live ammunition. For this, it is imperative for you to read and fully understand the safety mechanisms and effective usage methods of your gun.

XPS



XPS TACTICAL



COMPACT



Technical Specifications

Model	XPS	XPS TACTICAL	COMPACT	
Calibre	12	12	12	
Operating System	Gas Operated Semi Auto	Gas Operated Semi Auto	Gas Operated Semi Auto	
Weight (Unloaded)	3 kg.	3,9 Kg.	3,9 Kg.	
Total Length	123 cm.	101 cm.	77,5 cm.	
Height	19,5 cm.	20 cm.	25 cm.	
Barrel Length	47 - 51 cm.	47 - 51 cm.	47 - 51 cm.	
Magazine Capacity		3+1	5+1	8+1
Magazine Weight (Unloaded)		133 gr.	183 gr.	233 gr.

A GUN OWNER RESPONSIBILITY

It is the the owner of a gun's responsibility and obligation to ensure that any and all shooting activities are safe for all parties. This requires your personal commitment to carefully read, fully understand and exercise the principles of proper gun safety at all times.

DISCLAIMER

THE GUN TO WHICH THESE SAFETY RULES APPLY IS SOLD UNDER THE EXPRESSED CONDITIONS THAT THE MANUFACTURER ACCEPTS NO LIABILITY IN PART OR AS A WHOLE FOR BODILY INJURY, DEATH OR PROPERTY DAMAGE FROM IMPROPERLY OR CARELESSLY HANDLING THEGUN, USING DEFECTIVE, IMPROPER CALIBER, HAND-LOADED, NON STANDARD OR RELOADED AMMUNITION, INADEQUATE MAINTENANCE OF THE SHOTGUN RESULTING IN CORROSION DAMAGE AND/OR NEGLIGENCE OF MALFUNCTIONS.

KNOW AND EXERCISE YOUR LOCAL LAWS AND REGULATIONS WHEN;

- MODIFYING YOUR GUN AESTHETICALLY OR MECHANICALLY
- USING THE GUN IN RELATION TO CRIME AND/OR IRRESPONSIBLY.
- RESELLING THIS GUN IN THE SECOND HAND MARKET.
- EXECUTING PROPER SAFETY MEASURES (WHETHER MECHANICAL OR GUN CONTROL SAFETY)
- THE PRODUCER IS NOT IN CHARGE OF THE GUN DIRECTLY.

ATTENTION

IMPORTANT WARNING: IT IS IMPORTANT TO RECEIVE PROPER TRAINING FROM A COMPETENT FIREARMS INSTRUCTOR OR AUTHORITY BEFORE BEGINNING TO SHOOT OR HANDLING THE FIREARM.

IMPORTANT WARNING: FAILURE TO ADHERE TO THE RULES OF FIREARM SAFETY CAN RESULT IN SERIOUS INJURY, DEATH OR DESTRUCTION OF PROPERTY

- 1) COMPLETELY READ AND UNDERSTAND YOUR OWNER'S MANUAL GUIDELINES BEFORE USING YOUR GUN.**
- 2) YOU SHOULD FULLY UNDERSTAND YOUR GUN, ITS MECHANICS AND FUNCTIONS BEFORE YOU REMOVE THE GUN FROM ITS ORIGINAL PACKAGING**

Before you remove it out of the box thoroughly read the owner's manual on how to properly carry, handle, load, unload and store your new gun. Know the rules of proper gun safety and exercise them at all times because failure to do so may result in death or injury to yourself or others. Because it is impossible to list every situation or scenario, be aware that certain circumstances may require additional safety rules unique to that particular situation.

NEVER

- Give the shotgun to any person who has not thoroughly familiarized himself or herself with all of the information, safety rules and warnings within the owner's manual.

3) ALWAYS KEEP THE GUN UNLOADED UNTIL READY TO USE

Guns should be kept unloaded when not in use. Whenever you pick up a firearm, immediately engage the safety device (so the white marking is visible) and remove the magazine to visually inspect the chamber and confirm that it is clear. Always unload all ammunition from the chamber after removing the magazine in the following cases.

- 1) after shooting
- 2) before putting the gun away
- 3) before putting it into a holster
- 4) when not in use
- 5) before handing it over to another person.

NEVER

- Leave a loaded gun unattended, propped up against a surface or out of your hands.
- Assume a firearm is unloaded, even if the last time it was used is by you. Always check to make sure that there is no ammunition and the chamber is empty.
- Load a cartridge into the chamber until you are ready to fire.
- Carry or transport your shotgun with live ammunition in the chamber.
- Pass a gun to another person or accept a gun from another person, unless the cylinder or action is open and you have personally checked that the weapon is completely unloaded.
- Carry a loaded gun openly or in a carrying case.
- Never transfer or hand a loaded gun to someone else.

3) ALWAYS KEEP YOUR FINGER OFF THE TRIGGER UNTIL YOU ARE READY TO SHOOT.

When holding a gun, be sure to rest your finger on the trigger guard and along the side of the gun.

NEVER

- Touch the trigger until you are ready to fire.
- Joke about while handling a firearm.
- Rely on the safety devices of the gun. Mechanical safeties are never fool proof and can wear out and malfunction overtime. Remember to always handle all guns using proper gun safety guidelines.

4) ALWAYS KEEP THE GUN POINTED IN A SAFE DIRECTION

A safe direction is one in which an accidental discharge cannot or would not cause injury or harm to yourself or others. Use extreme caution especially when loading and unloading your gun. When handling a gun always treat it as if it was loaded and ready to fire, even if you think it is empty. The recommended carrying position of your shotgun is with the hammer in the de-cocked position and safety engaged.

NEVER

- Point your gun at anything you do not intend to shoot.
- Use a gun under the influence of alcohol, drugs or any other substances that may impair your judgment, skills, or physical abilities.
- Target shoot or hunt with a gun when you are fatigued or too tired to operate the gun safely.
- Use your gun if you have an illness or disability that could compromise your judgment and the safety of yourself or any other person.

5) ALWAYS USE THE CORRECT AMMUNITION

All guns have been manufactured to use a certain caliber or gauge of ammunition. Only use ammunition that the manufacturer has recommended. Always verify that you have the correct ammunition that matches the manufacturer's recommendations before loading. Using improperly reloaded or incorrect ammunition can cause injury and/or death. This can also damage or destroy your shotgun which will void any warranty

NEVER

- Shoot the gun unless you know you have the proper ammunition.
- Use hand loaded, non-standard or reloaded ammunition.
- Fire ammunition that exceeds industry standard pressure specifications.
- Use old, soiled or damaged ammunition.

6) ALWAYS STORE YOUR GUN IN A SECURED STORAGE AREA TO PREVENT UNAUTHORIZED ACCESS OR USE FROM OTHER INDIVIDUALS.

There are many types of gun storage devices as well as locking devices that attach directly to the gun itself. Each individual must consider their particular circumstances so that the firearm is stored and maintained for maximum safety and security. Metal gun safes are recommended over open racks or glass front cabinets. Mechanical safety systems mounted into the gun can fail and should not be used as a substitute for safe gun handling and adherence to all gun safety rules. Additionally, always store your ammunition locked up and secured separately from any guns.

NEVER

- Store or hide a loaded gun.
- Leave your gun where unauthorized access from other individuals can occur.
- Allow access to individuals who do not understand or follow the rules of proper gun safety
- Leave an unsecured firearm in a bed, drawer, closet or any vehicle that could allow access to children or other unauthorized individuals
- Allow children under the age of 18 access to any guns without close supervision and proper gun safety training.

7) ALWAYS COMPLY WITH ALL LOCAL, STATE AND FEDERAL LAWS THAT GOVERN THE OWNERSHIP, STORAGE, CARRYING AND USE OF GUNS.

- Store or hide a loaded gun.
- Leave your gun where unauthorized access from other individuals can occur.
- Allow access to individuals who do not understand or follow the rules of proper gun safety
- Leave an unsecured firearm in a bed, drawer, closet or any vehicle that could allow access to children or other unauthorized individuals
- Allow children under the age of 18 access to any guns without close supervision and proper gun safety training.

NEVER

- Vandalize any public or private property by using it as a target.

8) ALWAYS KNOW YOUR TARGET AND WHAT IS BEHIND IT

Before you pull the trigger, make sure of your target and what is behind it. Shoot only in areas that have approved backdrops such as a shooting range, or backstops such as a hillside or berm. Also, know how far your shot will travel in case you miss the target or the bullet ricochets.

NEVER

- Fire in the direction in which there are people.
- Fire at a sound, movement or a flash of color.
- Shoot directly upwards or at a high angle of elevation. Firing at or into the air can originate enough energy for projectile to travel long distances and accidentally injure or kill someone.

9) ALWAYS WEAR EYE/EAR/BODY PROTECTION

Gases and debris can cause injury so it is very important to wear proper PPE to preserve hearing and eyesight. Also, while in the field minimum of 1000 square inches wear blaze orange so that you can be visible by others.

NEVER

- Discharge a gun in a poorly ventilated area.

IMPORTANT WARNING:

POSSIBLE LEAD EXPOSURE CAN OCCUR WHEN DISCHARGING GUNS IN A POORLY VENTILATED AREA, CLEANING THE GUN OR HANDLING AMMUNITION. LEAD AND ITS COMPONENTS IS A SUBSTANCE KNOWN TO CAUSE BIRTH DEFECTS, REPRODUCTIVE DESTRUCTION/IMPAIRMENT, CANCER OR OTHER SERIOUS HEALTH CONDITIONS AND DISEASES. HAVE ADEQUATE VENTILATION AT ALL TIMES AND WASH YOUR HANDS AND OTHER CONTACT AREAS THOROUGHLY AFTER EACH EXPOSURE.

10) ALWAYS HANDLE WITH EXTREME CARE IF YOUR GUN FAILS TO FIRE WHEN THE TRIGGER IS PULLED.

If the ammunition does not fire when you pull the trigger, STOP! Remember to always keep the gun pointed in a safe direction. Keep your face away from the breech, then put the safety on, carefully open the action, unload the firearm and dispose of the cartridge safely. Always keep in mind that any time there is a shell in the chamber, your gun is loaded and ready to fire. Even if you tried shooting and the gun did not fire, always treat it as if it could still discharge.

11) ALWAYS TREAT THE GUN AS IF IT WAS LOADED (EVEN IF THE SAFETY IS ENGAGED) AND KEEP YOUR FINGERS AWAY FROM THE TRIGGER WHEN LOADING AND UNLOADING

A gun is a mechanical device. It is not foolproof and is subject to wear and tear over time. Always keep your fingers away from the trigger when you are loading and unloading. If the manual safety proves to be ineffective for any reason, then the danger of an unintentional discharge exists and the weapon must be immediately unloaded and restricted from further use. Contact KRAL Arms so that the gun can be inspected and repaired by an authorized gunsmith. **REMEMBER THAT ANY GUN SAFETY MECHANISM CAN FAIL, EVEN IF IT IS ENGAGED. YOU SHOULD ALWAYS ASSUME THAT A GUN IS LOADED WHEN HANDLING IT.**

12) ALWAYS KEEP YOUR SHOTGUN IN THE SAME MECHANICAL AND STRUCTURAL CONFIGURATION AS IT WAS WHEN IT WAS MANUFACTURED

This shotgun was produced under specific manufacturer guidelines and should not be altered or changed under ANY circumstances. Performing conversions by altering the trigger, mechanical components, safety mechanisms or using any other products other than those provided in the original box is NOT RECOMMENDED by the manufacturer and could result in death, bodily harm or compromising your safety or the safety of others. Any alteration made to the gun also voids the factory warranty.

NEVER

Alter, convert or change your gun from its original manufacturer approved configuration

IMPORTANT WARNING:

THIS GUN WAS DESIGNED TO FUNCTION PROPERLY IN ITS ORIGINAL CONDITION. THE MANUFACTURER WILL NOT BE HELD LIABLE OR LEGALLY RESPONSIBLE FOR ANY ALTERATION PERFORMED ON THE GUN AFTER IT LEAVES THEIR DIRECT CONTROL. THIS INCLUDES ANY ADDITION OR SUBSTITUTION OF PARTS OR ACCESSORIES THAT ARE NOT MANUFACTURED BY KRAL ARMS. ANY CHANGES MADE TO THE GUN; SPECIFICALLY AS OUR INSTRUCTIONS STATE AND WE EXPRESSLY DO NOT AUTHORIZE ANY CHANGES TO BE MADE.

DO NOT JEOPARDIZE THE SAFETY OF YOURSELF OR OTHERS BY MAKING MODIFICATIONS TO YOUR GUN.

13) ALWAYS MAKE SURE THE BARREL IS CLEAR OF ANY OBSTRUCTIONS BEFORE SHOOTING

Before loading always perform a safety check to make sure that there is no ammunition in the chamber or magazine. Examine the barrel for any obstructions or debris such as excess lubricant, dirt or grease. If the bore is obstructed it can cause increased pressure causing the barrel to bulge or burst during use. Always use a cleaning rod and patch to remove any residues or obstructions in the barrel. Be familiar with your gun. If the noise or recoil seems muffled or weak then STOP! And proceed to unload your gun and check to make sure nothing is lodged in the barrel.

NEVER

- Try to shoot out an obstruction by loading and firing another shell.

SERIAL NUMBER OF THE GUN

The serial number is located on various parts of the shotgun. Each serial number is specific to that shotgun and is used for identification and registration. It is recommended that you record your serial number in your manual and keep the information in a secured location.

LOADING THE SHOTGUN

- 1) First, point the shotgun in a safe direction. Remember, a safe direction means that the gun is pointed so that even if it goes off, it would not cause injury, damage or death. Always perform a safety check to make sure that the chamber is empty.
- 2) When the magazine is empty, the bolt catch lever holds the bolt open at the rear. Press the magazine release to remove the empty magazine and insert a loaded magazine. Remember to only use ammunition that is recommended by the manufacturer.
- 3) Push down the bolt catch lever with the thumb of the shooting hand and this will allow the bolt to move forward and chamber a round.

THE SHOTGUN IS NOW LOADED AND READY TO FIRE!

IMPORTANT WARNING : ALWAYS UNLOAD YOUR GUN IMMEDIATELY AFTER SHOOTING

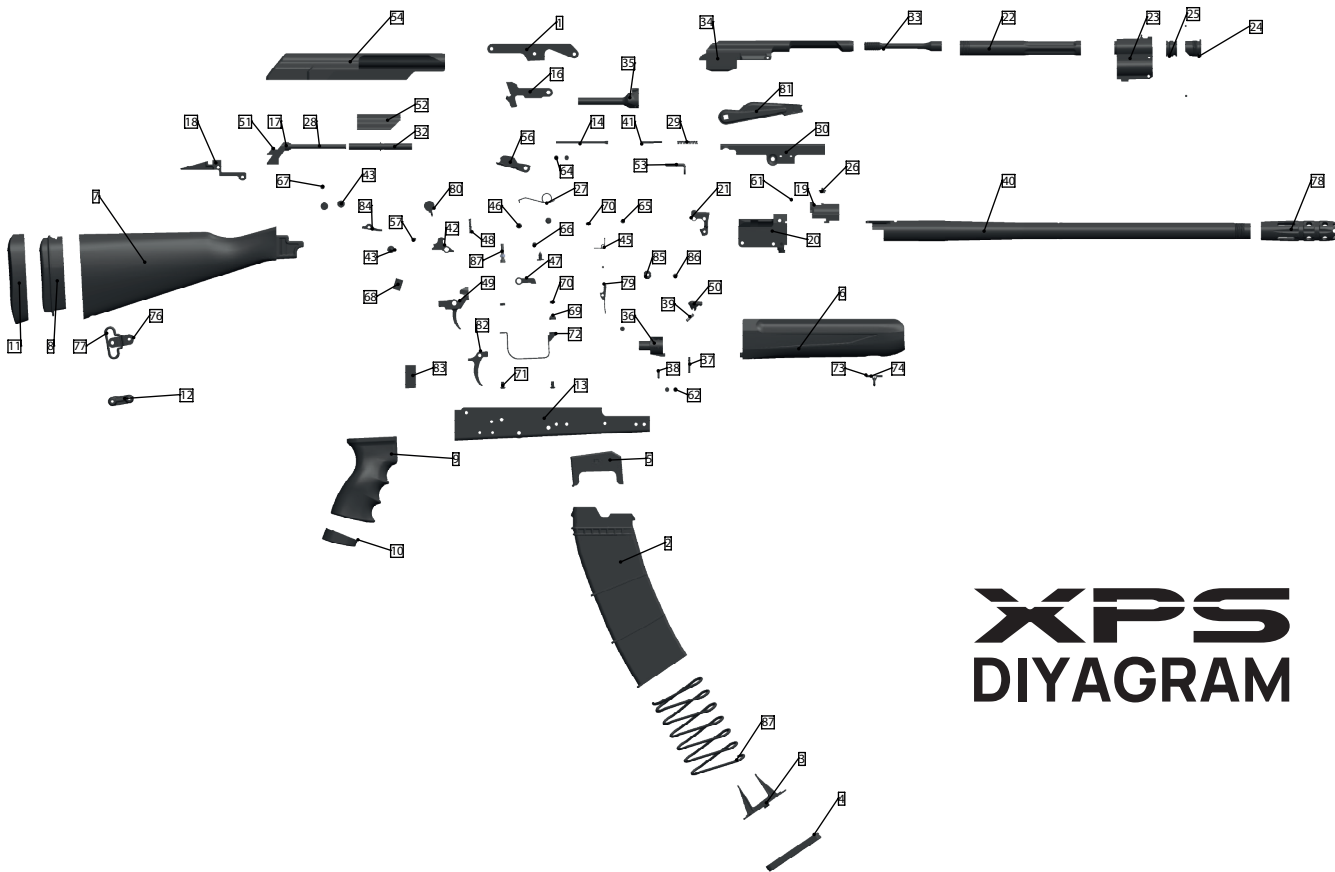
UNLOADING THE GUN

Point the shotgun in a safe direction, remember. A safe direction means that the gun is pointed so that even if it goes off, it would not cause injury, damage or death.

- Keep your fingers off the trigger and remove the magazine.
- Pull back the charging handle several times to ensure the chamber is empty. Watch for a Live round or empty case to be ejected. Pull the charging handle fully backward and lock the bolt with the bolt catch lever.
- Make sure the last round in the chamber has been extracted and ejected. Visually and physically check the chamber and the magazine well to make sure the shotgun has been fully unloaded.

WARNING CONCERNING MOBILE CHOKES

NEVER IGNORE THE SAFETY RECOMMENDATIONS AND LEAN IN FRONT OF THE BARREL OR TRY TO CHANGE THE CHOKE TUBES WHILE THE GUN IS LOADED. NEVER SHOOT YOUR GUN BEFORE MAKING SURE THE CHOKE TUBE IS SCREWED ALL THE WAY IN. THIS CAN CAUSE THE THREADS OF EITHER THE CHOKE TUBE OR THE BARREL TO DEFORM; AND IF THIS HAPPENS, NEVER SHOOT YOUR GUN. OR ELSE THE BARREL CAN SUSTAIN DAMAGE AND/OR THE CHOKE TUBE TO BE FIRED AWAY WITH THE PROJECTILE CAUSING INJURY, DEATH OR OTHER SERIOUS DAMAGES. DO NOT FIRE YOUR GUN WITHOUT ANY CHOKE TUBES, DOING THIS WILL CAUSE THE PROJECTILES(S) TO TRAVEL UNPREDICTABLY; ALSO CAUSING DEFORMATION ON THE THREADS ON THE BARREL. THIS WILL CAUSE YOU TO NOT BE ABLE TO USE ANY CHOKES IN THE FUTURE.



XPS DIYAGRAM

XPS DIYAGRAM

1 RECEIVER MAIN BODY	30 SLIDE PLATE RIGHT	59 GAS CHAMBER PIN 1
2 MAGAZINE	31 SLIDE PLATE LEFT	60 GAS CHAMBER PIN 2
3 MAGAZINE FLOOR PLATE LOCK	32 GUIDE ROD HOUSING	61 HOUSING PIN
4 MAGAZINE FLOOR PLATE	33 MECHANISM END	62 FRICTION STAMP 6
5 FOLLOWER	34 MECHANISM	63 FRICTION STAMP 7
6 FOREND	35 MECHANISM REAR	64 FRICTION STAMP 4
7 STOCK	36 MECHANISM FRONT	65 FRICTION STAMP 8
8 BUTT PAD MOUNTING PART	37 MECHANISM LONG PIN	66 FRICTION STAMP 3
9 PISTOL GRIP	38 EXTRACTOR PIN	67 FRICTION STAMP 1
10 PISTOL GRIP LATCH	39 EXTRACTOR SPRING	68 PISTOL GRIP PLATE
11 BUTT PAD	40 BARREL	69 TRIGGER GUARD LOWER
12 SWIVEL WASHER	41 FRONT NEEDLE	70 TRIGGER GUARD NUT
13 SCOPE RAIL ADAPTER	42 DISCONNECTOR	71 TRIGGER GUARD SCREW
14 REAR FIRING NEEDLE	43 PLATE BLANKING PLUG	72 TRIGGER GUARD
15 FRONT SIGHT	44 TRIGGER LEVER PIN	73 FOREND SWIVEL MOUNTING PLATE
16 MANUAL BOLT CATCH	45 TRIGGER LEVER SPRING	74 FOREND SWIVEL MOUNTING LOWE PLATE
17 SHIELD HOLDER	46 TRIGGER PIN	75 FOREND SWIVEL
18 STOCK CONNECTION PART	47 TRIGGER SPRING BLOCK	76 STOCK SWIVEL
19 GAS PISTON BEARING BODY	48 TRIGGER SPRING	77 STOCK SWIVEL WIRE
20 BARREL BEARING BODY	49 TRIGGER	78 SWIVEL MOUNTING PLATE
21 HOLDER FOR EJECTOR AND MAGAZINE RELEASE	50 EJECTOR	79 TRIGGER LEVER
22 GAS PIPE	51 UPPER SHIELD LEVER	80 SWIVEL
23 GAS CHAMBER	52 DUST COVER	81 FLASH HIDER
24 GAS HOLDER SCREW	53 DUST COVER INNER RING	82 REAR TRIGGER
25 GAS PISTON	54 UPPER SHIELD	83 GRIP SUPPORT
26 REAR SIGHT	55 REAR LEVER PIN	84 TRIGGER PLATE
27 HAMMER SPRING	56 HAMMER	85 OPERATING HANDLE
28 INNER PIN	57 FRICTION STAMP 1	86 OPERATING HANDLE SCREW
29 NEEDLE SPRING	58 FRICTION STAMP 2	87 MAGAZINE SPRING

KRAL ARMS XPS DISASSEMBLY INSTRUCTIONS

MANUFACTURERS WARNING:

THE MANUFACTURED SHOTGUN WAS DESIGNED TO PERFORM WITH ITS ORIGINAL PARTS. IT IS YOUR RESPONSIBILITY TO MAKE SURE THAT ANY PARTS YOU BUY FOR IT ARE AUTHENTIC, CORRECTLY INSTALLED AND THAT THE PARTS HAVE NOT BEEN ALTERED OR CHANGED. IT IS IMPERATIVE THAT ONLY FACTORY PARTS ARE USED AS REPLACEMENTS TO ASSURE THAT THE SHOTGUN REMAINS FUNCTIONALLY SAFE AND OPERATES ACCURATELY. THE GUN OWNER ACCEPTS FULL RESPONSIBILITY FOR THE CORRECT REASSEMBLY AND FUNCTIONING OF THE SHOTGUN AFTER ANY DISASSEMBLY OR REPLACEMENT OF PARTS.

IMPORTANT WARNING: BEFORE YOU BEGIN ANY DISASSEMBLY ALWAYS 1) POINT THE SHOTGUN IN A SAFE DIRECTION 2) BE SURE THAT YOU REMOVE THE MAGAZINE FROM THE FIREARM 3) VISUALLY AND MANUALLY INSPECT THE CHAMBER TO CONFIRM THAT IT IS EMPTY.



While pushing the lever lock (on the top of the lever) down; push the lever forward in order to take the upper shield out



2. Push the lever forward release the guide rod and spring assembly out of its rail



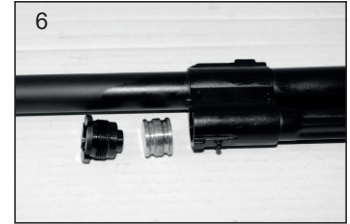
3. Take the assembly out by pulling it forward



4. Take the swivel screw out in order to dismantle the forend.



5. While pushing the gas chamber nut pin, take the gas chamber nut out with the wrench provided in the packaging.



6. Take the gas piston out.

XPS TACTICAL DISASSEMBLY INSTRUCTIONS



1. Take the flash hider out by rotating it counter-clockwise.



2. Pull the flash hider and completely remove it.



3. Take the hand support plastic part screw out by using a screwdriver.



4. Slide the part out on the aluminum hand rail and remove it from the gun.



5. Take the mounting screw out to remove the aluminum hand rail from the shotgun.

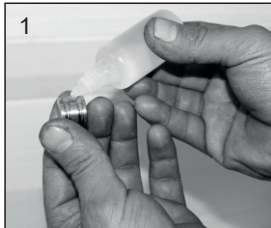


6 - 7) Ensure the hand rail is not mounted. / Slide the hand rail to the front of the barrel to take it completely out.

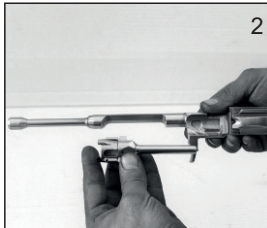


8. Your shotgun is disassembled.

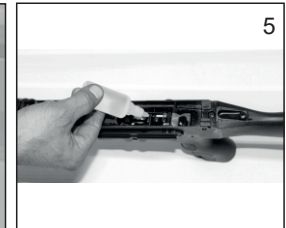
CLEANING AND MAINTAINING YOUR XPS, XPS TACTICAL, COMPACT



1. Clean the gas piston with a rag and oil the part.



2) 3) 4) Take the mechanism out and clean all the parts with a rag and oil them.



5) Oil the trigger assembly from the top of the shotgun.

IT IS RECOMMENDED TO CLEAN YOUR SHOTGUN AFTER EVERY 250 ROUNDS

LOADING AMMUNITION TO YOUR SHOTGUN



1) Remove the magazine



2) Make sure the chamber is empty



3) Load the magazine up to its capacity with correct caliber ammunition that complies with CIP standards.



4) This is the position the shotgun should be in while loading or unloading

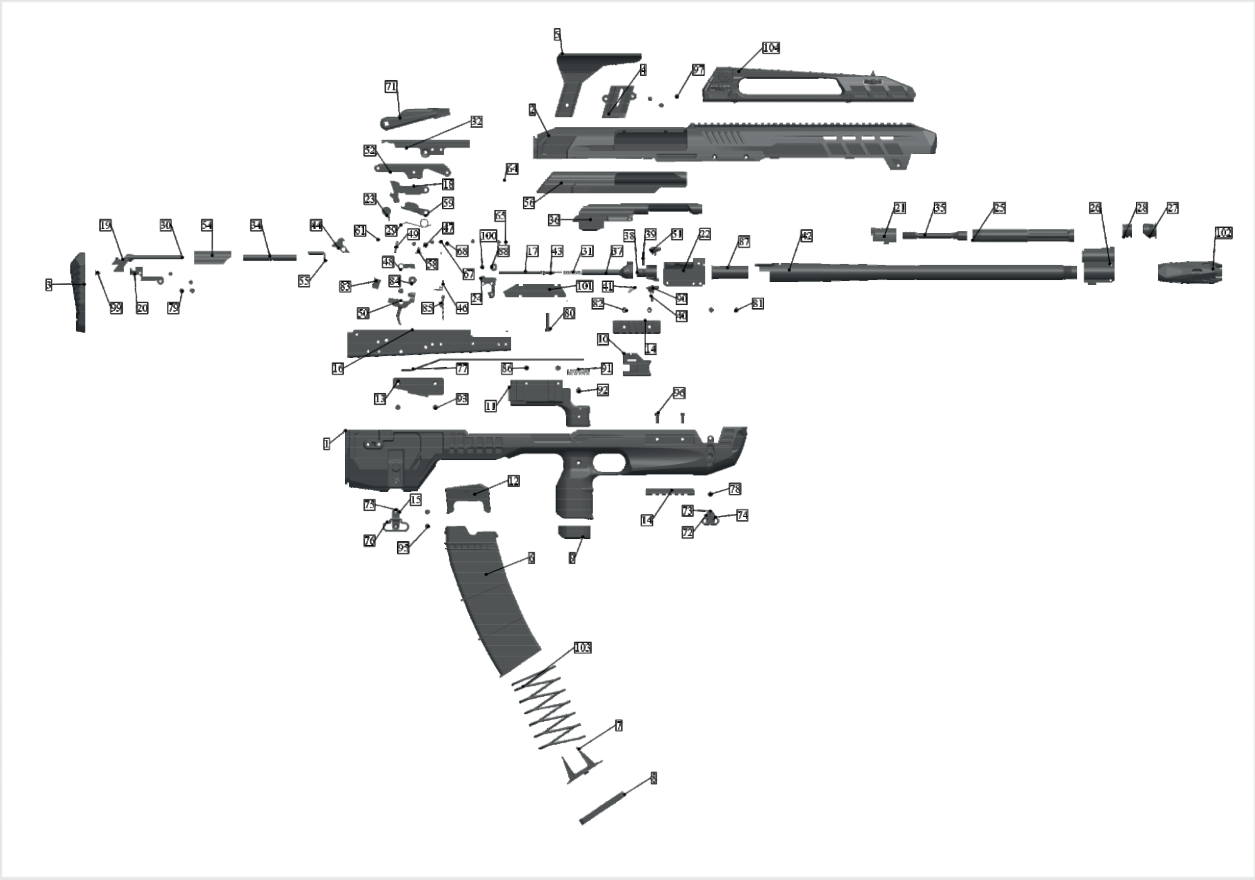


5) Pull the operating handle toward yourself and release it.



6) Make sure the round is chambered tightly and fully.

COMPACT DIYAGRAM



COMPACT DIYAGRAM

1	COMPACT STOCK	27	GAS CHAMBER NUT	53	UPPER PLATE LEVER	79	BODY CONNECTION SCREW (REAR)
2	COMPACT UPPER SHIELD	28	GAS PISTON	54	DUST COVER	80	BODY CONNECTION SCREW (FRONT)
3	BUTT PAD	29	HAMMER SPRING	55	DUST COVER RING	81	PICATINNY SCREW
4	CHEEK PIECE FIXED APPARAT	30	INNER PIN	56	UPPER SHIELD	82	PICATINNY NUT
5	CHEEK PIECE	31	NEEDLE SPRING	57	REAR LEVER PIN 1	83	PISTOL GRIP PLATE
6	MAGAZINE	32	RIGHT SLIDE PLATE	58	PLATE BLANKING PLUG	84	CHEEK PIECE BRACE
7	MAGAZINE FLOOR PLATE LOCK	33	LEFT SLIDE PLATE	59	HAMMER	85	TRIGGER LEVER
8	MAGAZINE FLOOR PLATE	34	MECHANISM SPRING PIN	60	FRICTION STAMP 5	86	UPPER RECEIVE TRIGGER CONNECTION SCREW
9	PISTOL GRIP BOTTOM LATCH	35	MECHANISM END PISTON	61	FRICTION STAMP 2	87	12 CAL SHELL
10	FORE TRIGGER	36	OPERATING HANDLE	62	GAS CHAMBER PIN 1	88	OPERATING HANDLE
11	TRIGGER ASSEMBLY BODY	37	REAR MECHANISM	63	GAS CHAMBER PIN 2	89	TRIGGER STOP
12	SHELL LOADER	38	FRONT MECHANISM	64	HOUSING PIN	90	EJECTOR
13	SAFETY BEARING PLASTIC PIECE	39	MECHANISM LONG PIN	65	FRICTION STAMP 6	91	TRIGGER SPRING
14	PICATINNY	40	EJECTOR PIN	66	FRICTION STAMP 7	92	RECIVER MOUNTING SCREW FOR TRIGGER
15	SWIVEL MOUNTING PLATE	41	EJECTOR PIN SPRING	67	FRICTION STAMP 4	93	SAFETY BEARING SCREW
16	RECEIVER BODY	42	BARREL	68	FRICTION STAMP 8	94	FRONT SWIVEL SCREW
17	REAR NEEDLE	43	FRONT NEEDLE	69	FRICTION STAMP 3	95	REAR SWIVEL SCREW
18	MANUAL BOLT CATCH	44	FORE TRIGGER	70	FRICTION STAMP 1	96	PICATINNY LOWER MOUNTING SCREW
19	UPPER GUIDE ROD ASSY. LEVER	45	MAGAZINE LEVER PIN	71	SAFETY	97	CHEEKPIECE FIXING SCREW
20	MAIN SPRING ASSY. LEVER	46	MAGAZINE LEVER SPRING	72	FRONT SWIVEL MOUNTING PLATE	98	CHEEKPIECE ELEVATION ADJUSTMENT SCREW
21	GAS CHAMBER HOUSING	47	TRIGGER PIN	73	FRONT SWIVEL LOWER MOUNTING PLATE	99	UPPER REAR FIXING SCREW
22	BARREL BEARING BODY	48	TRIGGER SPRING HOUSING	74	FRONT SWIVEL WIRE	100	OPERATING HANDLE CONNECTING SCREW
23	INNER SAFETY CASTED PIECE	49	TRIGGER SPRING	75	REAR SWIVEL MOUNTING PLATE	101	MARKING PLATE FOR COMPACT
24	DROPPER	50	TRIGGER	76	REAR SWIVEL WIRE	102	FLASH HIDER
25	GAS PIPE	51	EJECTOR	77	FORE TRIGGER AND TRIGGER CONNECTION WIRE	103	103 MAGAZINE SPRING
26	GAS CHAMBER	52	SIDE BLANKING PLUG	78	CONNECTION PIN	104	CARRYING HANDLE (FRONT&REAR) SIGHTS ASSY

COMPACT

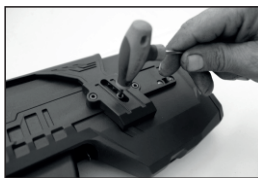
KRAL COMPACT SHOTGUN DISMANTLING INSTRUCTIONS



1) Take the butt pad off.



2) Release the allen screw underneath the butt pad.



3) Take the adjustment screw out on the cheek piece.



4) Take the cheek piece out.



5) Take the snap ring out from the upper area of the front swivel mounting with the help of a flat bladed screw driver.



6) After taking the snap ring out, take the pin out from the other side.



7) Unscrew the screws mounting the upper body to the lower body on either side with allen screwdriver.



8) You can now take the upper side apart from the lower side by pushing from the butt end first.



NOTE: You can use the instructions in 18th, 19th, 20th and 21st pages to further dismantle your shotgun to clean it. Other than the cleaning and maintaining purposes, never dismantle your shotgun.

IMPORTANT WARNING: BEFORE YOU START CLEANING YOUR SHOTGUN ALWAYS MAKE SURE IT IS UNLOADED AND POINTED IN A SAFE DIRECTION.

LUBRICATION WARNING: FIRING A SHOTGUN WITH OIL, GREASE OR OTHER DEBRIS PARTIALLY OR FULLY OBSTRUCTING THE BORE MAY RESULT IN DAMAGE TO THE GUN OR INJURY TO THE SHOOTER AND THOSE NEARBY. BEFORE FIRING, MAKE SURE THE BORE AND CHAMBER OF THE BARREL IS UNOBSTRUCTED AND DRY. NEVER SPRAY OR APPLY LUBRICANT ON SHOTSHELLS. FIRING ANOTHER SHOTSHELL AFTER AN OBSTRUCTION HAS OCCURRED MAY DAMAGE THE SHOTGUN AND CAUSE DEATH OR INJURY. ONLY USE APPROVED LUBRICANTS AND LUBRICATE SPARINGLY. YOU ARE RESPONSIBLE FOR THE PROPER CARE AND MAINTENANCE OF YOUR SHOTGUN.

STEP 1 : DISASSEMBLE YOUR SHOTGUN.

STEP 2 : USING A PROPER CLEANING ROD, RUN A SOLVENT-WETTED RAG THROUGH THE BORE SEVERAL TIMES. THIS WILL THEN BE FOLLOWED BY RUNNING DRY RAGS THROUGH THE BORE TO REMOVE ANY DEBRIS OR RESIDUE.

STEP 3 : IF THE BORE IS CONTAMINATED WITH LEAD TO THE EXTENT THAT THE ABOVE PATCH CLEANING PROCEDURE DID NOT REMOVE THE LEAD, THEN SCRUB THE BORE FULL LENGTH WITH A SOLVENT-WETTED BRASS BRISTLE BRUSH. WHEN THE LEAD RESIDUE IS LOOSE THEN REPEAT STEP #2.

STEP 4 : THE SURFACES OF BOLT CARRIER, EJECTOR AND INSIDE SURFACES OF THE RECEIVER SHOULD BE COATED VERY LIGHTLY WITH LOW VISCOSITY LUBRICATING OIL.

STEP 5 : REASSEMBLE THE SHOTGUN AND WIPE THE EXTERIOR METAL SURFACES SPARINGLY WITH AN OILED CLOTH. SWAB THE BORE WITH AN OILY RAG BEFORE STORING THE GUN.

STEP 6 : PLACE THE SHOTGUN IN A SAFE, LOCKED STORAGE SPACE WHERE UNAUTHORIZED PERSONS CAN NOT ACCESS TO THE GUN. NEVER STORE THE SHOTGUN IN A LEATHER CASE AS LEATHER ABSORBS OIL.

NOTICE: THE INFORMATION AND WARNINGS IN THIS MANUAL CAN BE SUBJECT TO CHANGE WITHOUT PRIOR NOTIFICATIONS



For international dealers please visit:
www.kralarms.com

Follow Us on:

