

# PCP

## AIR RIFLES

**Puncher Breaker**

**Puncher Empire**

**Puncher Empire X**

**Puncher Empire XS**

**Puncher Monarch**

**Puncher Knight**



# KRAL ARMS



# KRAL ARMS

Welcome - About Your Airgun.....	2
Warning.....	3-4
General Parts Explanation.....	5-6
Demand and General Information.....	7-9
Dissamble The Barrel.....	10
Filling The Magazine.....	11
Mechanism Parts and Part Numbers.....	12-19
Breaker.....	12
Empire.....	14
Monarch.....	16
Knight.....	18
Warranty Certificate.....	20



## KRAL ARMS WARNING!

We would like you to know how happy we are to see you in this huge family as a user of puncher. Now you will be able to benefit from the services that the members of this family have benefited for many years and also you will be able to use your airgun confidently and peacefully for many years by paying attention to the instructions and taking into consideration this handbook as an integrated part of your airgun.

Using and maintaining your airgun as per the information included in this handbook will help you use your airgun hassle-free and safely. Even if the warranty expires, you can share the problems in your airgun with us or give your feedback to us while you join us in festivals that are organized each year all to your distributors. Since we know Your airgun the best after you and we want to take care of it. We would like to remind you that our after-sales team is waiting for you in order to answer your questions and assist you.

## ABOUT YOUR AIRGUN

All of the components of your airgun have been designed and tested to meet all of the international standards by fully automatic cnc machines using Turkish and Italian steels at the highest quality standards of Kral Arms.

Note : This user manual has been prepared to cover all puncher models. You may find remarks and specifications that do not belong to your airgun.

The information and details in this handbook are valid for the period during which this was printed and 'Kral Silah San.' reserves The right to change or cancel the details related to any model without any obligation or warning.

Hope you enjoy your experience  
Kral Arms



## KRAL ARMS WARNING!



### CAUTION !

THIS IS NOT A TOY. ONLY PERSONS OF AT LEAST 18 YEARS OLD WITH MENTAL AND PHYSICAL CAPABILITY CAN USE IT



### CAUTION !

IN CASE OF SURFACE PARALLEL OR SKY SHOOTS, YOU MAY CAUSE DAMAGE TO 1000 yards (1km) AROUND YOU WITH THE EFFECT OF THE ACCELERATION OR FREE FALL EFFECT.



### CAUTION !

YOUR AIRGUN'S SAFETY SHOULD ALWAYS BE ON (SAFETY ACTIVE) AND YOU SHOULD TURN OFF THE SAFETY ONLY RIGHT BEFORE THE IDEAL SOURCE LINE TO THE TARGET. (SAFETY PASSIVE)



### CAUTION !

CHARGE WITH THE AIR THAT YOU ARE SURE TO HAVE BEEN DRIED WITH ELECTRICAL OR GRANULE TYPE DRYER. IN CASE OF FILLING WITH ORIGINAL KRAL PUNCHER HAND PUMP AVOID RAPID MOVEMENTS. OTHERWISE, LOWER SIDE OF THE PUMP MAY GO OUT OF THE IDEAL WORKING TEMPERATURE AND SWEAT WHICH WILL CAUSE HUMID CHARGING OF YOUR AIR TUBE.



### CAUTION !

DO NOT FORCE YOUR AIR TANK TO OPEN (DEMOUNT). DO NOT USE ANY TANK THAT HAS BEEN TAMPERED DUE TO FALLING OR VARIOUS REASONS.



### CAUTION !

OBEY THE LAWS, REGULATIONS AND RULES THAT ARE IN PLACE IN THE RELEVANT COUNTRY, PROVINCE, DISTRICT OR HUNTING GROUND WHETHER PRIVATE OR PUBLIC.



## KRAL ARMS WARNING!

### Always Remember The Following Precautions

- Try not to go shooting alone.
- Never use the airgun if you are intoxicated or under the influence of drugs.
- There is high pressure air inside your shotgun that is charged with the logic of squeezing
- Even if there is no pressure sign on the manometer, never disassemble the pressurized tube!
- Bring the safety on before interrupting your shotgun in any way and never point the barrel to yourself under any circumstance
- Only use cotton dry cloth to clean any dirt inside the barrel for various reasons (humidity, dust, etc.)
- You may observe that the groupment performance of the shotgun has reduced if you interrupt your shotgun due to dirt barrel outside the instructions given by the manufacturer (hard objects, cleaning with gear type mineral and synthetic oils, etc.) and cause your shot to go out of the warranty.
- In your shotgun, some of the parts work with larger tolerances while others are narrower. For this reason, use only synthetic or mineral base oil with high viscosity not creating filling effect.
- Your shotgun has been designed not to cause any sliding effect with corrosion.
- Various acids and bleaches inside the anti-corrosive oils might damage the tightness equipment and some of the covered surfaces.
- Calculate the areas where pellet might reach in each of your shoot on or off the target. This is extremely important for the safety of yourself and also living and non-living objects around you.
- Do not run or jump with a loaded shotgun. Your barrel should always point a safe distance while jumping through the ditches



- Always keep your shotgun at safety
- In case of long storage of your shotgun, always keep your shotgun dry-fired. (The spring type equipment that are always kept tight might undergo tightening or reduction in case of long storage)
- We do not recommend disassembling and reassembling the shotgun unless necessary. Do not disassemble or replace the original parts of your shotgun under any circumstance. Please contact the factory, general distributor or the authorized services of Kral Arms throughout Turkey.
- We especially recommend you to act as if your shotgun is always loaded. Even if you are in an empty land or forest, make sure that safety is on and your barrel points a safe direction. The owner of the shotgun shall be responsible for any damage.

**THIS REMINDER HAS BEEN WRITTEN TO KEEP YOU AWAY FROM MISTAKES  
THAT MIGHT CAUSE INJURIES AND EVEN DEATH.**



## CAUTION !

### DANGER OF EXPLOSION!

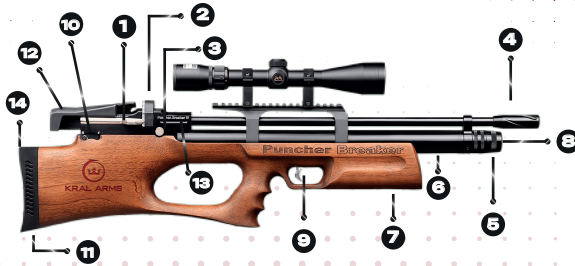
THE AIR TANK POSES THE **EXPLOSION RISK** IF IT GETS HEATED  
SUBJECT TO SUNRAY FOR EXTENDED PERIOD OF TIME.  
(Max. + 40° / Min. -05° )

OTHERWISE, THE AIRGUN SHOULD BE  
LEFT TO COOL DOWN IN A COOL ENVIRONMENT  
RECOMMENDED TO BE TRANSPORTED UNDER MAXIMUM 80 BARS  
PRESSURE DURING FLIGHTS.



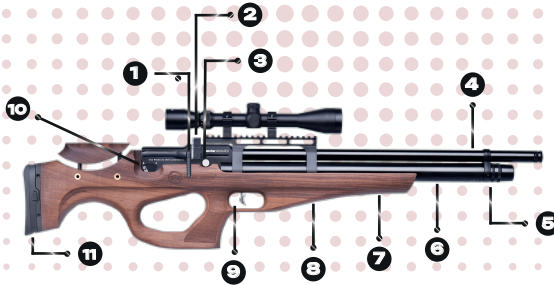
KRAL ARMS

**BREAKER**



- 1 Manuel cocking with side ergonomic jimmy
- 2 Otomatic or new generation mechanically indexed magazine
- 3 Adjustable air pressure valve
- 4 Barrel
- 5 Filling Side
- 6 Air Tank
- 7 Bipod screw
- 8 Manometer
- 9 Squeeze distance and clearance adjustable trigger
- 10 Manuel safety
- 11 Butt-pad
- 12 Horizontally moving pad
- 13 High alloy monoblock body
- 14 Adjustable cheek piece

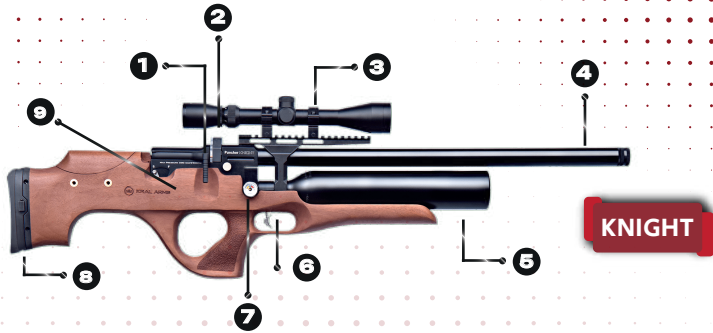
**MONARCH**



- 1 Manuel cocking with side ergonomic jimmy
- 2 Otomatic or new generation mechanically indexed magazine
- 3 Adjustable air pressure valve
- 4 Barrel crawn and outhter protection
- 5 Filling Side
- 6 Air Tank
- 7 Bipod screw
- 8 Nanometer
- 9 Squeeze distance and clearance adjustable trigger
- 10 Manuel safety
- 11 Adjustable butt-pad

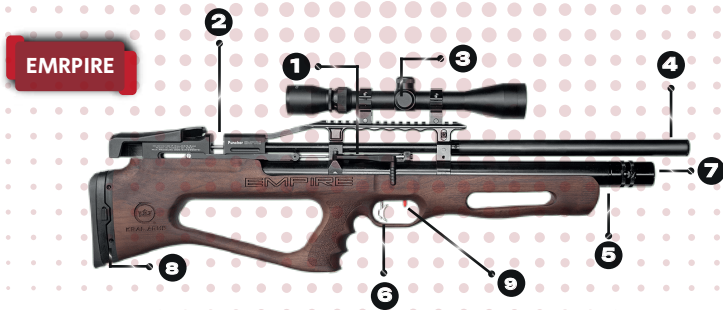


KRAL ARMS



**KNIGHT**

- |   |               |   |                    |   |                     |
|---|---------------|---|--------------------|---|---------------------|
| 1 | Cocking lever | 4 | Shrouded barrel    | 7 | Manometer           |
| 2 | Magazine      | 5 | Air Tank           | 8 | Adjustable butt-pad |
| 3 | Scope         | 6 | Adjustable trigger | 9 | Manuel safety       |



**EMPIRE**

- |   |                           |   |                      |   |                     |
|---|---------------------------|---|----------------------|---|---------------------|
| 1 | Side lever cocking system | 4 | Half shrouded barrel | 7 | Manometer           |
| 2 | Magazine                  | 5 | Air Tank             | 8 | Adjustable butt-pad |
| 3 | Scope                     | 6 | Adjustable trigger   | 9 | Ergonomic safety    |



## KRAL ARMS

### DEMOND AND GENERAL INFORMATION



### SEPARATING THE BODY

The carbine stock ( monoblock ) side of your shotgun has been balanced from center of gravity, positioned not to be subject to pressure or impact and dixed with a single allen head screw.You can remove easily with the help of 4 allen.

### TRIGGER ADJUSTMENT

You can adjust the trigger movement distance without disassembling the shotgun but only through the bellow of the trigger guardrail(see picture 1) and adjust the hammer falling through inner trigger set screw



### SAFETY

Safety "F" position means ready to fire (safety closed see picture 3)  
Safety "S" position means ready to fire (safety open see picture 3)





## KRAL ARMS

### DEMOND AND GENERAL INFORMATION



#### **MAGAZINE PLACEMENT**

The new generation mechanic magazine can be attached and removed from the right side. The magazine that has run out of pellet will not permit new charge.

#### **MANOMETER**

Manometer might vary based on the puncher models. (air tank vertical to the front or body side).





## KRAL ARMS

### DEMOND AND GENERAL INFORMATION



### FILLING THE AIR TANK

The filling outlet is located at the tip of the air tube. Assemble the hose with the filling jack that is provided free of charge inside the box as a standard. If you hear sound of air during the first filling, move the jack and enable the rings to be air-proof. If the leakage continues, o-rings might be deformed.

### SINGLE SHOT ASSISTANT

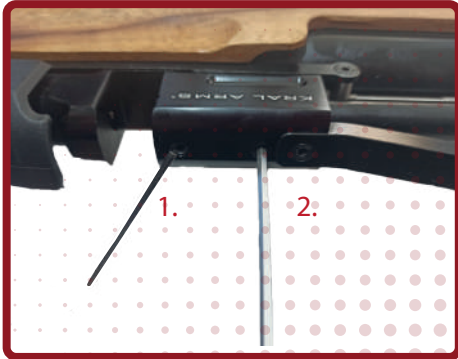
Single shot kit is a part that can be attached and removed only from the right side. 4.5mm (0.177) can be used with different sizes of kit while 5.5mm (0.22) and 6.35mm (0.25) can use the same kit.





## KRAL ARMS

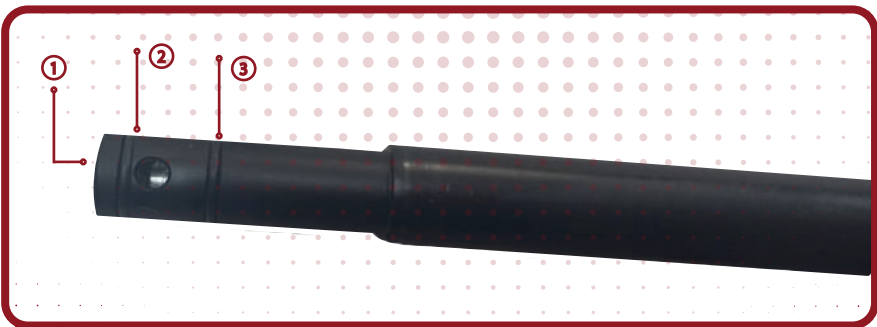
### DISSAMBLE THE BARREL



Dissamble the assemble screw of the receiver.(screw1)

Dissamble the assemble screw of the receiver(screw2).

Remove the barrel slowly.



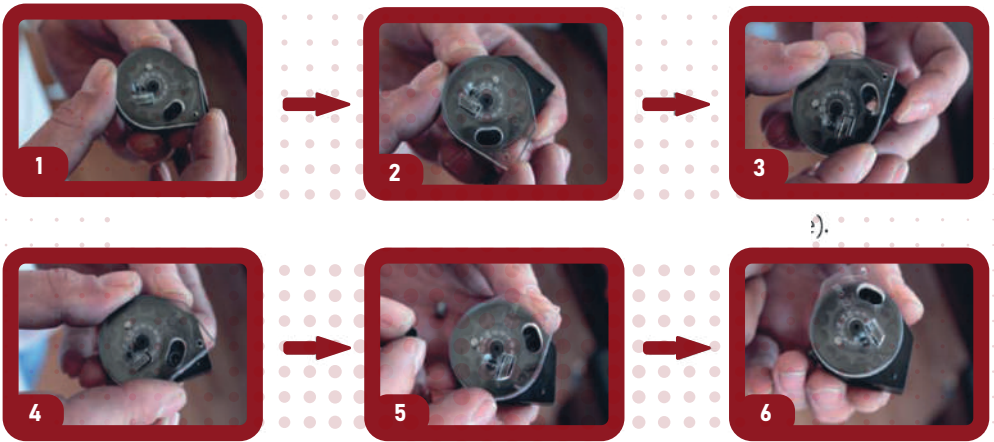
Barrel tightness o rings are three totally and 2 of them are outside ( ② ) ( ③ ) while 1,inside. ( ① ). In case of deformation , please replace with the spare o rings that are available inside the packaging.



**KRAL ARMS**

**FILLING THE MAGAZINE**

Rotate the idle front cover in the direction of the arrow ( clockwise).



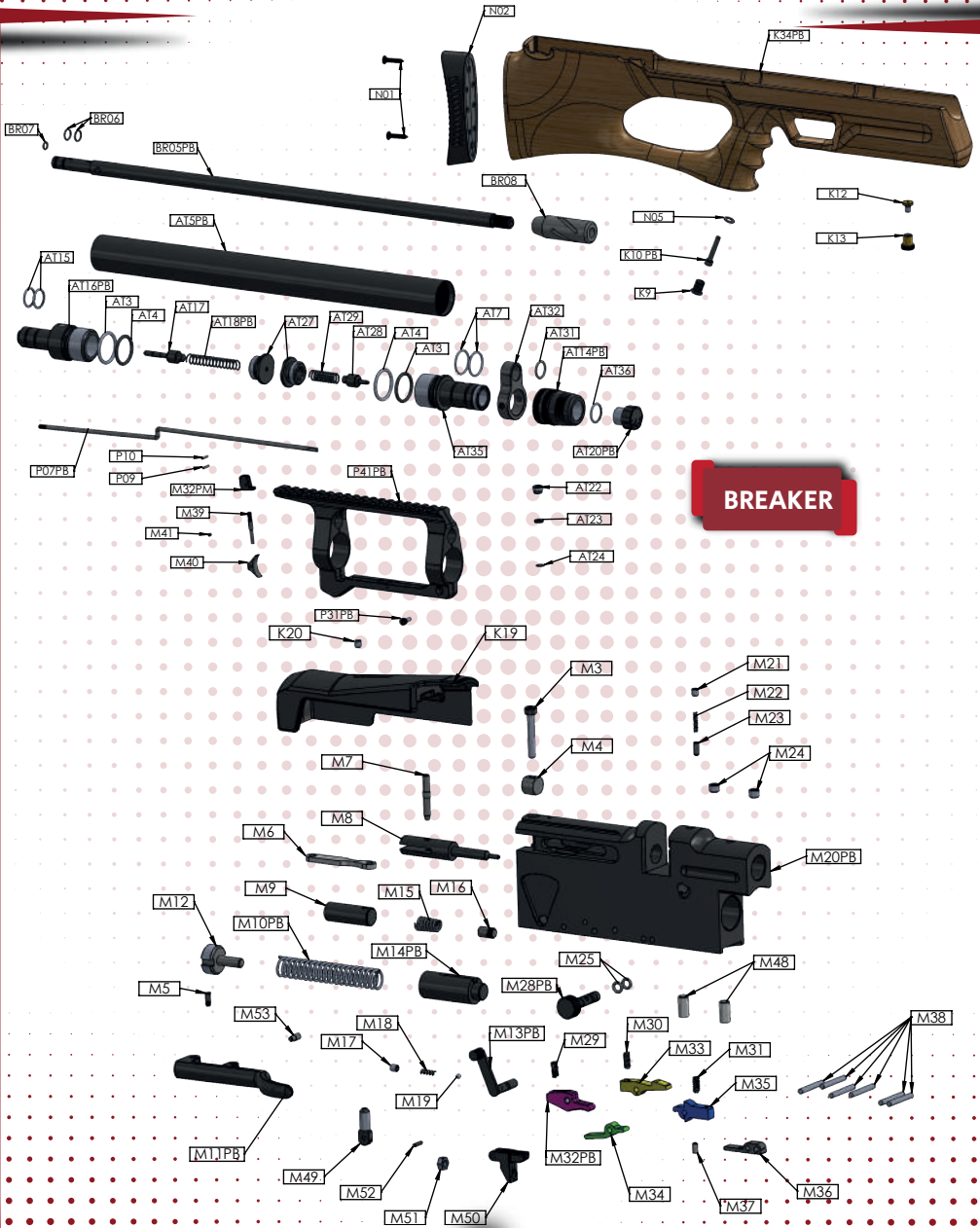
Once the glass cover hits are last point, prevent the pushing force of the spring and switch the Pellet to first bed(see picture 4).Once the first pellet prevents the rotation of the inner turret, move the glass cover on the contrary direction and fill the turret.

**Note:** It will prevent the assembly of turret system, do not force.  
To watch the video, please visit [www.kralarms.com](http://www.kralarms.com)



# KRAL ARMS

## MECHANISM PARTS AND PART NUMBERS



**BREAKER**



# KRAL ARMS

## MECHANISM PARTS AND PART NUMBERS

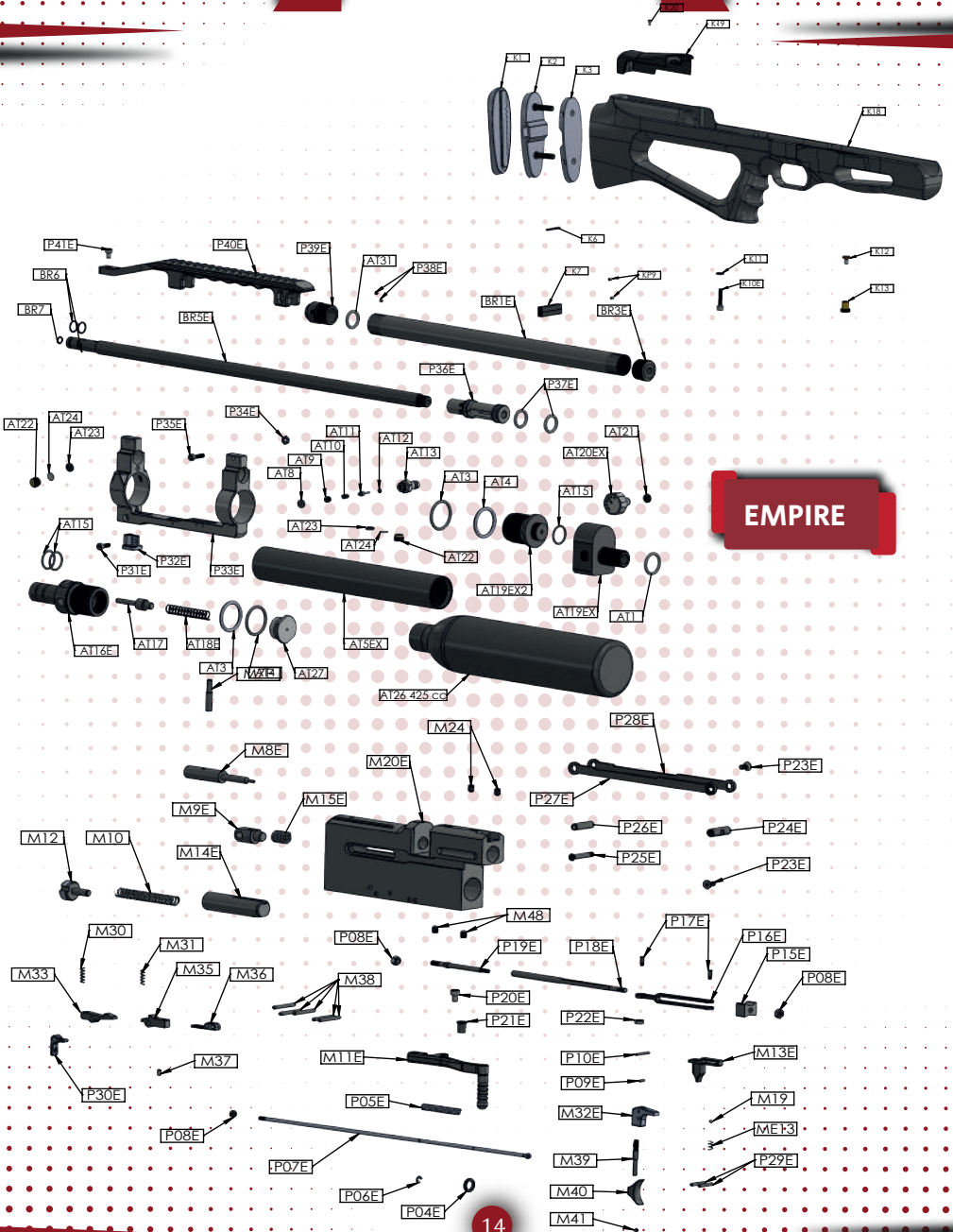
### BREAKER

N01	Butt Pad Screw	M48	Valve Block Fixing Set-Screw
NO2	Butt Pad	M49	Loading Part Screw
N05	Receiver Fixing pulley	M50	Loading Part Trigger
K9	Fixing Part Set Screw	M51	Trigger Wire Nut
K10PB	Stock fixing Screw	M52	Loading Part Screw Pin
K12	Picatinny Assemble Nut	M53	Hammer to Receiver Screw
K13	Picatinny Assemble Screw	K19	Cheek Piece
K34PB	Breaker Wood Stock	K20	Cheek Piece Fixing Set-Screw
M3	Cocking Lever fixing Screw	BR5PB	Barrel
M4	Cocking Lever Fixing Nut	BR6	Barrel Outer O-ring
M5	Cocking Lever Combination Screw	BR7	Barrel Inner O-ring
M6	Cocking Lever Connecting Part	BR8	Flash Hider
M7	Connecting Pin	AT3	Air Tank Front Valve Block O-ring(1)
M8	Needle	AT4	Air Tank Front Valve Block O-ring(2)
M9	Needle Connection Part	AT5PB	Air Tank Pipe
M10PB	Hammer Spring	AT7	Filling Port Valve Block O-ring
M11PB	Cocking Lever	AT15	Valve Block O-rings
M12	Hammer setting screw	AT16PB	Valve Block
M13PB	Safety	AT17	Long Valve
M14PB	Hammer	AT18PB	Long Valve Spring
M15	Needle Connection Part Spring	AT20PB	Manometer
M16	Needle Spring Set-Screw	AT22	Safety Fixing Part
M17	Safety Set-Screw	AT23	Safety Lower O-Ring
M18	Safety Spring	AT24	Safety pulley
M19	Safety Ball	AT25	Connecting Block
M20PB	Receiver	AT26	500 cc Air Tube
M21	Adjustable Power Set-Screw	AT27	Valve Block Cover
M22	Adjustable Power Spring	AT28	Short Valve
M23	Adjustable Power Pin	AT29	Short Valve Spring
M24	Barrel Fixing Set-Screw	AT31	Barrel Ring O-ring
M25	Adjustable Power O-Ring	AT32	Tight Ring
M28PB	Adjustable Power Button	AT35	Filling Port Valve Block Valve
M29	Trigger Spring	AT36	Manometer Lower O-Ring
M30	Inner Hammer Spring	P07PB	Trigger Wire
M31	Locking Spring	P09PB	Trigger Wire Fixing Pin
M32PB	Trigger	P10	Trigger Picatinny Fixing Pin
M33	Inner Hammer	P31PB	Picatinny Fixing Screw
M34	Loading Part	P41PB	Picatinny
M35	Inner Hammer Holder	M32PB	Trigger
M36	Hammer Holder Cover	M39	Trigger Wire
M37	Hammer Holder Adjustable Set-Screw	M40	Trigger
M38	Trigger Group Fixing Pin	M41	Trigger Set-Screw



# KRAL ARMS

## MECHANISM PARTS AND PART NUMBERS



**EMPIRE**



# KRAL ARMS

## MECHANISM PARTS AND PART NUMBERS

### EMPIRE

K1	Butt Pad	P18E	Cocking Lever Long Wire
K2	Butt Pad Fixing Part	P19E	Cocking Lever Short Wire
K3	Butt Pad Fixing Body	P20E	Cocking Lever Fixing Screw
K6	Butt Pad Button Spring	P21E	Cocking Lever Fixing Screw Socket
K7	Butt Pad Button	P22E	Cocking Lever Rullman
KP9	Stock Fixing Set-screw	P23E	Screw
K10E	Stock Fixing Screw	P24E	Cocking Lever Combining Part
K11	Pulley	P25E	Cocking Lever Combining Screw
K12	Picatinny Assemble Nut	P26E	Cocking Lever Connection Socket
K13	Picatinny Assemble Screw	P27E	Right Cocking Lever
K18	Wood Stock	P28E	Left Cocking Lever
K19	Cheek Piece	P29E	Safety Pin
K20	Cheek Piece Screw	P30E	Trigger Loading Part
M7E	Connecting Pin	BR1E	Shroud Barrel
M8E	Needle	BR3E	Shroud Centered Heading
M9E	Needle Connection Part	BR5E	Barrel
M10E	Hammer Spring	BR6	Barrel Outer O-ring
M11E	Cocking Lever	BR7	Barrel Inner O-ring
M12	Hammer Adjustment Screw	AT3	Air Tank Front Valve Block O-ring(1)
M13E	Safety	AT4	Air Tank Front Valve Block O-ring(2)
M14E	Hammer	AT5E	Air Tank Pipe
M15E	Needle Connection Part Spring	AT7	Filling Port Valve Block O-Ring
M19	Safety Ball	AT14E	Filling Port Block Cover
M20E	Receiver	AT15	Valvee Block O-Ring
M24	Barrel Fixing Set-Screw	AT16E	Filling Port Valve
M30	Inner Hammer Spring	AT17	Long Valve
M31	Locking Spring	AT18E	Long Valve Spring
M32E	Trigger	AT20KE	Manometer
M33	Inner Hammer	AT22	Safety Fixing Part
M35	Inner Hammer Holder	AT23	Safety Lower O-Ring
M36	Hammer Holder Cover	AT24	Safety Pully
M37	Hammer Holder Adjustable Set-Screw	AT27	Valve Block Cover
M38	Trigger Group Fixing Pins	AT28	Short Valve
M39	Trigger Wire	AT29	Short Valve Spring
M40	Trigger	AT31	Barrel Ring O-Ring
M41	Trigger Set-Screw	AT35	Filling Port Block
M48	Valve Block Fixing Set-Screw	AT36	Manometer Lower O-Ring
ME13	Safety Spring	P31E	Stock Screw Part Fixing Screw
P04E	Pulley	P32E	Stock Screw Fixing Part
P05E	Trigger Spring	P33E	Rail
P06E	Folding Stock Connecting Pin	P34E	Upper Picatinny Fixing Nut
P07E	Trigger Wire	P35E	Upper Picatinny Fixing Screw
P08E	Nut	P36E	Shroud Inner Suppressor
P09E	Trigger Wire Pin	P37E	Shroud Inner Suppressor O-Ring
P10E	Trigger Fixing Pin	P38E	Shroud Fixing Set-Screw
P15E	Barrel Port to AirTube	P39E	Shroud Centered Part
P16E	Jimmy	P40E	Upper Picatinny
P17E	Jimmy Screws	P41E	Upper Picatinny Fixing Screw





# KRAL ARMS

## MECHANISM PARTS AND PART NUMBERS



### MONARCH



# KRAL ARMS

## MECHANISM PARTS AND PART NUMBERS

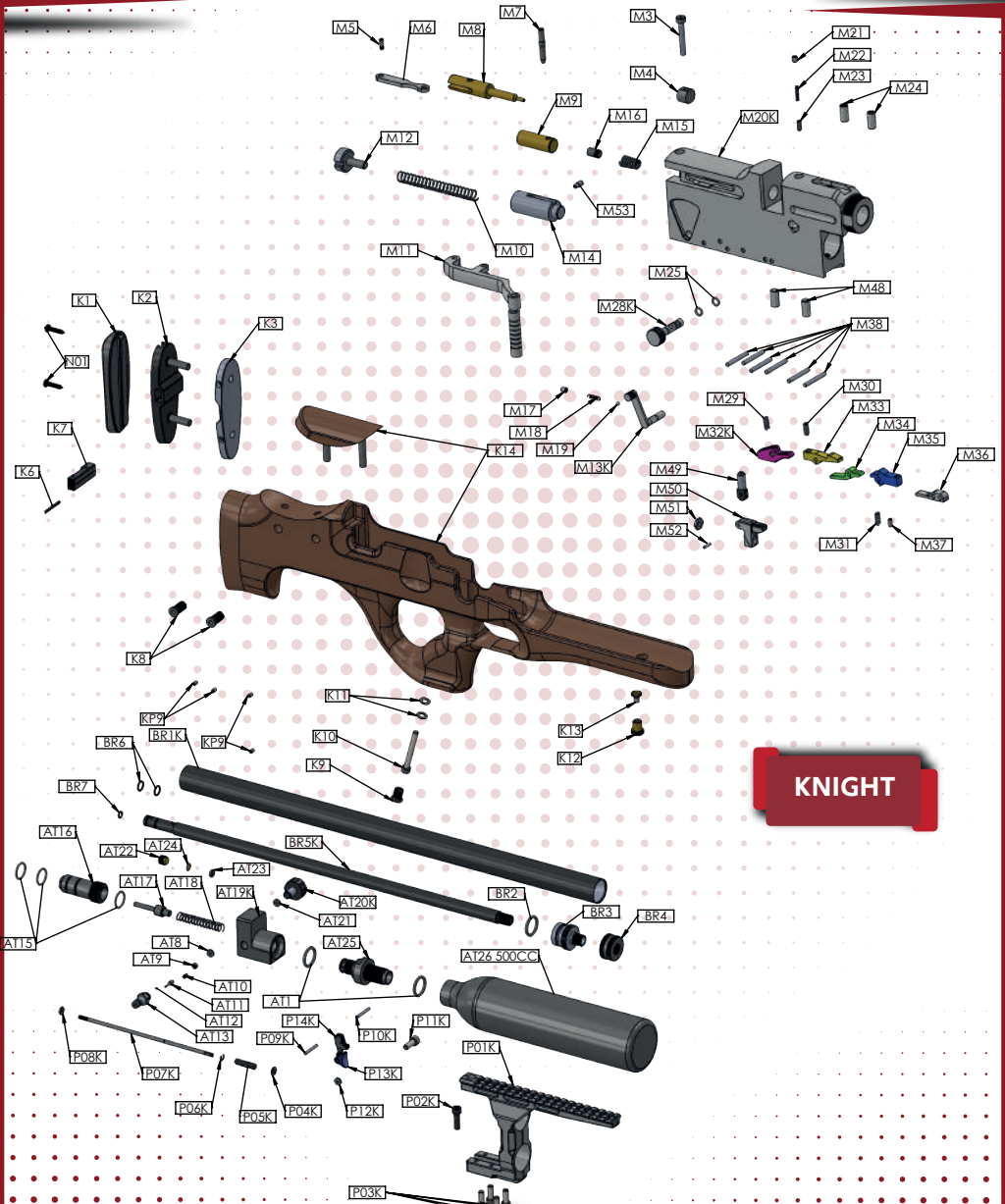
### MONARCH

M35	Inner Hammer Holder	K1	Butt Pad
M36	Hammer Holder Cover	K2	Butt Pad Fixing Part
M37	Hammer Holder Adjustable Set-Screw	K3	Butt Pad Fixing Body
M38	Trigger Group Fixing Pin	K6	Butt Pad Button Spring
M48	Valve Block Fixing Set-Screw	K7	Butt Pad Button
M49	Trigger Loading Part Fixing Screw	K8	Cheek Piece Fixing Set Screw Part
M50	Trigger Loading Part	K9	Stock Fixing Screw Cover
M51	Trigger Loading Part Nut	KP9	Fixing Set Screw
M52	Trigger Loading Part Pin	K10M	Stock fixing screw
M53	Hammer to Receiver Screw	K11	Pulley
BR1M	Shroud Barrel	K12	Picatinny Assemble Nut
BR5M	Barrel	K13	Picatinny Assemble Screw
BR6	Barrel Outer O-ring	K27M	Wood Stock
BR7	Barrel Inner O-ring	N01	Butt Pad Fixing Body
BR13	Shroud Centering Part	M3	Cocking Lever Fixing Screw
BR14	Shroud Centering Part Nut	M4	Cocking Lever Fixing Nut
AT3	Air Tank Front Valve Block O-ring(1)	M5	Cocking Lever Combination Screw
AT4	Air Tank Front Valve Block O-ring(2)	M6	Cocking Lever Connecting Part
AT14M	Filling Port Block Cover	M7	Connecting Pin
AT15	Valve Block O-rings	M8	Needle
AT16	Valve Block	M9	Needle Connection Part
AT17	Long Valve	M10	Hammer Spring
AT18	Long Valve Spring	M11	Cocking Lever
AT19M	Valve Block	M12	Hammer Adjustment Screw
AT20M	Manometer	M13M	Safety
AT22	Safety Fixing Part	M14	Hammer Spring
AT23	Safety Lower O-Ring	M15	Needle Connection Part Spring
AT24	Safety pulley	M16	Needle Spring Set-Screw
AT27	Valve Block Cover	M17	Safety Set-Screw
AT35	Filling Port Block Cover	M18	Safety Spring
AT36	Manometer Lower O-Ring	M19	Safety Ball
AT59	Wide Ring	M20M	Receiver
P04M	Pulley	M21	Adjustable Power Set-Screw
P05M	Spring	M22	Adjustable Power Spring
P06M	Folding Stock Connecting Pin	M23	Adjustable Power Pin
P07M	Trigger Wire	M24	Barrel Fixing Set-Screw
P09M	Trigger Wire Fixing Pin	M25	Adjustable Power O-Ring
P10M	Trigger Picatinny Fixing Pin	M28M	Adjustable Power Button
P31M	Picatinny Fixing Screw	M29	Trigger Spring
P41M	Picatinny	M30	Inner Hammer Spring
M32M	Trigger	M31	Locking Spring
M39	Trigger Wire	M32M	Inner Trigger
M40	Trigger	M33	Inner Hammer
M41	Trigger Set-Screw	M34	Loading Part



# KRAL ARMS

## MECHANISM PARTS AND PART NUMBERS



**KNIGHT**



# KRAL ARMS

## MECHANISM PARTS AND PART NUMBERS

### KNIGHT

K1	Butt Pad	M30	Inner Hammer Spring
K2	Butt Pad Fixing Part	M31	Locking Spring
K3	Butt Pad Fixing Body	M32K	Trigger
K6	Butt Pad Button Spring	M33	Inner Hammer
K7	Butt Pad Button	M34	Loading Part
K8	Cheek Piece Fixing Set Screw Part	M35	Inner Hammer Holder
K9	Stock Fixing Screw Cover	M36	Hammer Holder Cover
KP9	Fixing Set Screw	M37	Hammer Holder Adjustable Set-Screw
K10	Stock fixing screw	M38	Trigger Group Fixing Pin
K11	Pulley	M48	Valve Block Fixing Set-Screw
K12	Picatinny Assemble Nut	M49	Trigger Loading Part Fixing Screw
K13	Picatinny Assemble Screw	M50	Trigger Loading Part
K14	Wood Stock	M51	Trigger Loading Part Nut
N01	Butt Pad Fixing Screw	M52	Trigger Loading Part Screw
K1	Butt Pad	M53	Hammer to Receiver Screw
K2	Butt Pad Button Nut	BR1K	Shroud Barrel
K6	Butt Pad Button Spring	BR2	Shroud Centering O-Ring
K7	Butt Pad Button	BR3	Shroud Centering Part
K10	Stock fixing Screw	BR4	Shroud Centering Nut
K11	Pulley	BR5K	Barrel
K12	Picatinny Assemble Screw	BR6	Barrel Outer O-ring
K13	Picatinny Assemble Screw	BR7	Barrel Inner O-ring
KP3	Butt Pad Fixing Body	AT1	Tube Front Valve Block O-ring
KP4	Synthetic Stock	AT8	Filling Port Lower O-Ring
KP5	Cheek Piece Adjustable Nut	AT9	Filling Port Set-Screw
KP6	Cheek Piece Adjustable Screw	AT10	Filling Port Spring
KP7	Cheek Piece	AT11	Filling Port Valve
KP8	Cheek Piece Adjustable Cover	AT12	Filling Port Valve O-Ring
KP9	Fixing Set Screw	AT13	Filling Port
M3	Cocking Lever Fixing Screw	AT15	Valve Block O-rings
M4	Cocking Lever Fixing Nut	AT16	Valve Block
M5	Cocking Lever Combination Screw	AT17	Long Valve
M6	Cocking Lever Connecting Part	AT18	Long Valve Spring
M7	Connecting Pin	AT19K	Valve Block
M8	Needle	AT20K	Manometer
M9	Needle Connection Part	AT21	Manometer Lower O-Ring
M10	Hammer Spring	AT22	Safety Fixing Part
M11	Cocking Lever	AT23	Safety Lower O-Ring
M12	Hammer Adjustment Screw	AT24	Safety pulley
M13K	Safety	AT25	Connecting Block
M14	Hammer Spring	P01K	Picatinny
M15	Needle Connection Part Spring	P02K	Picatinny Fixing Screw
M16	Needle Spring Set-Screw	P03K	Picatinny Block Fixing Screw
M17	Safety Set-Screw	P04K	Pulley
M18	Safety Spring	P05K	Spring
M19	Safety Ball	P06K	Folding Stock Connecting Pin
M20K	Receiver	P07K	Trigger Wire
M21	Adjustable Power Set-Screw	P08K	Trigger Wire Nut
M22	Adjustable Power Spring	P09K	Trigger Wire Fixing Pin
M23	Adjustable Power Pin	P10K	Trigger Picatinny Fixing Pin
M24	Barrel Fixing Set-Screw	P11K	Trigger Screw
M25	Adjustable Power O-Ring	P12K	Trigger Nut Screw
M28K	Adjustable Power Button	P13K	Trigger
M29	Trigger Spring	P14K	Trigger



**KRAL ARMS**

**PRODUCT**

Type : \_\_\_\_\_

Brand : \_\_\_\_\_

Model : \_\_\_\_\_

Serial : \_\_\_\_\_

Caliber : \_\_\_\_\_

Barrel Length : \_\_\_\_\_

Title : \_\_\_\_\_

Address : \_\_\_\_\_

Tel : \_\_\_\_\_

Invoice Date : \_\_\_\_\_

Invoice Number : \_\_\_\_\_

Signature : \_\_\_\_\_

Delivery Date and Location : \_\_\_\_\_

Maximum Date Time : 20 Days

Warranty Period : 2 Years

# WARRANTY CERTIFICATE



**KRAL ARMS**

**CUSTOMER**

Name : \_\_\_\_\_

Surname : \_\_\_\_\_

Address : \_\_\_\_\_

Tel : \_\_\_\_\_

ID : \_\_\_\_\_

**Producer / Importer Company**

KRAL ARMS

Tel: 0332 524 68 70 Px : 0332 524 68 71

[www.kralarms.com](http://www.kralarms.com)

P.K. 42720 - Beyşehir/KONYA



**KRAL ARMS**



+90332 524 68 70



+90332 524 68 71



export@kralarms.com



www.kralarms.com



42720 - Beyşehir / KONYA

