

Kullanıcı el kitabı

Türkçe

Instruction manual

English

PCP

AIR RIFLES

Puncher Ekinoks

Puncher Auto



KRAL ARMS



KRAL ARMS

Welcome - About Your Airgun.....	2
Warning.....	3-4
General Parts Explanation.....	5
Demond and General Information.....	6-8
Dissamble The Barrel.....	9
Filling The Magazine.....	10
Mechanism Parts and Part Numbers.....	11-14
Ekinoks.....	11-12
Auto.....	13-14
Warranty Certificate.....	15



KRAL ARMS WARNING!

WELCOME TO THE FAMILY

As a Ekinoks / Auto / NP-04 user, we want you to know that we are happy to see you in this big family. You can benefit from the services that this family has been benefit for years. You can also consider this owner's manual as an integral part of your rifle. You will be able to use your rifle in peace and safety for generations by taking care of the instructions in it.

Use your rifle according to the information in the manual. Maintenance of the rifle will ensure trouble-free and safe use. Even if you have completed the warranty period, please share the problems with your rifle. Because we know your rifle the best after you and we want to take care. We would like to help you with this request and We would like you to know that our after sales team awaits you to answer your questions.

ABOUT YOUR RIFLE

Note: This user's manual is intended to cover all "Ekinoks/Auto/NP-04" models. You can also find equipment descriptions and specifications that do not belong to your rifle. The information and details contained in this book are valid for the period in which it is published. However, the King arms industry has the right to change or cancel the details of the models at any time without notice or obligation.



KRAL ARMS WARNING!



CAUTION !

It is not a toy. Only individuals aged 18 or more with mental and physical competence may use it.



CAUTION !

Keep in mind that you can damage 1000 yard (1 km) environment with free fall or the acceleration effect of your rifle when you're shooting parallel to the surface or to the sky.



CAUTION !

Your rifle must always be in the safety-open(safety active) position and you must close it before creating the ideal welding line for the target.(safety passive)



CAUTION !

Charge with air that is sure to be dried with an electric or granular type dryer. Avoid serial movements when filling with the original King Puncher hand pump. Otherwise, the bottom of the pump will rise above the ideal operating temperature, causing sweating and charging moist air into your air tank. In such cases, mold and explosion problems may occur in the product due to moisture.



CAUTION !

Do not push the air tank to disassembly. Never use air tank which is crushed as a result of falling or jammed for various reasons. Pay attention to the laws, regulations and rules that have been enacted in various countries, provinces, districts, hunting areas, polygons, etc.



KRAL ARMS WARNING!

Always Remember The Following Precautions

Keep the following cautions in mind !

- Be attentive to not go hunting alone.
- Do not use your Pcp while under the influence of alcohol or drugs.
- Your rifle is high-pressure air which is charged compression logic.
- Do not disassemble the pressured cylinder even if pressure is not displayed on the manometer.
- Always make sure that your pcp is at safe mode before attempting any action on your pcp.
- Wipe the dirt(moisture, dust, etc.) from the barrel only with a cotton, dry cloth.
- If you interfere with your muzzle that has been contaminated for various reasons (attempting to clean it with hard objects, gear-type lubricants and synthetic oils), you may observe that your rifle has deteriorated from the performance of the previously provided rifle and may cause the part to be excluded from the warranty.
- Some parts of your rifle work with wide tolerances and others with narrower tolerances. For this reason, use only synthetic or mineral oil with high viscosity and no filling effect. Your rifle is designed not to cause boiling with corrosion (rust). Various acids and bleaches contained in rust-removing oils can damage sealing equipment and some coating surfaces.
- Be careful about the areas where the pellet can go when it's hit the target or not. This is of the utmost importance for the safety of you and other visible or non-living objects in the environment.
- Do not run, do not jump with loaded rifle. When you're jumping from ditches, your barrel should always look at a safe spot.



DO NOT FORGET !!

Keep the following cautions in mind !

- Always keep your rifle safe-mode.
- Always keep the trigger safely squeezed in case of long-term storage. (Stretched spring-type equipment can show narrowing and shrinkage effect in long-term waiting.) We do not recommend disassembling your rifle when you do not need it. Under no circumstances, you shouldn't disassemble or modify the original parts of your rifle. Please let us know for all kinds of problems .
- We recommend you that always act as if your rifle is loaded. Even if you think you are in an empty field or forest, make sure your rifle is at safe-mode and your muzzle is pointing a safe spot. The user of the rifle is responsible for all negative situations that may occur.



THIS REMINDER HAS BEEN WRITTEN TO KEEP YOU AWAY FROM MISTAKES
THAT MIGHT CAUSE INJURIES AND EVEN DEATH.



CAUTION !

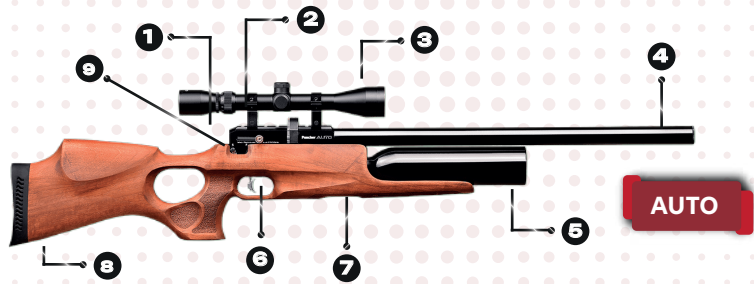
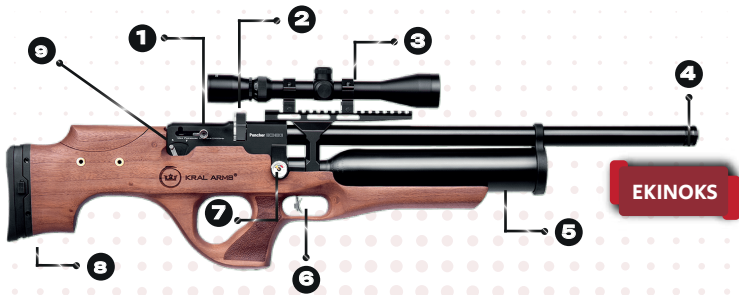
DANGER OF EXPLOSION!

THE AIR TANK POSES THE **EXPLOSION RISK** IF IT GETS HEATED
SUBJECT TO SUNTRAY FOR EXTENDED PERIOD OF TIME.
(Max. + 40° / Min. -05°)

OTHERWISE, THE AIRGUN SHOULD BE
LEFT TO COOL DOWN IN A COOL ENVIRONMENT
RECOMMENDED TO BE TRANSPORTED UNDER MAXIMUM 80 BARS
PRESSURE DURING FLIGHTS.



KRAL ARMS GENERAL PARTS EXPLANATION



1 Cocking lever

2 Magazine

3 Scope

4 Shrouded barrel

5 Air Tank

6 Adjustable trigger

7 Manometer

8 Butt-pad

9 Manual safety



KRAL ARMS

DEMOND AND GENERAL INFORMATION

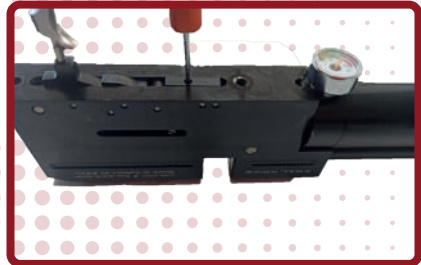


SEPARATING THE BODY

The carbine stock (monoblock) side of your shotgun has been balanced from center of gravity, positioned not to be subject to pressure or impact and dixed with a single allen head screw.You can remove easily with the help of 4 allen.

TRIGGER ADJUSTMENT

You can adjust the trigger movement distance without disassembling the shotgun but only through the bellow of the trigger guardrail(see picture 1) and adjust the hammer falling through inner trigger set screw



SAFETY

Safety "F" position means ready to fire (safety closed see picture 3)
Safety "S" position means ready to fire (safety open see picture 3)





KRAL ARMS

DEMOND AND GENERAL INFORMATION



MAGAZINE PLACEMENT

The new generation mechanic magazine can be attached and removed from the right side. The magazine that has run out of pellet will not permit new charge.

MANOMETER

Manometer might vary based on the puncher models. (air tank vertical to the front or body side).



POWER ADJUSTMENT

Barrel tightness o rings are three totally and 2 of them are outside while 1 is inside. In case of deformation, please replace with the spare o ring that are available inside the packaging.



KRAL ARMS

DEMOND AND GENERAL INFORMATION



FILLING THE AIR TANK

The filling outlet is located at the tip of the air tube. Assemble the hose with the filling jack that is provided free of charge inside the box as a standard. If you hear sound of air during the first filling, move the jack and enable the orings to be air-proof. (if the leakage continues, o rings might be deformed)

SINGLE SHOT ASSISTANT

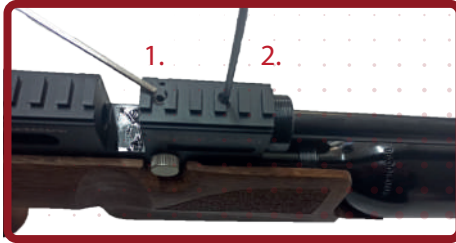
Single shot kit is a part that can be attached and removed only from the right side. 4.5mm (0.177) can be used with different sizes of kit while 5.5mm (0.22) and 6.35mm (0.25) can use the same kit.





KRAL ARMS

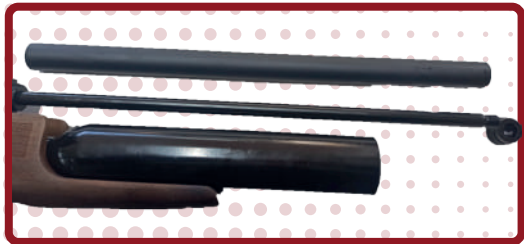
DISSAMBLE THE BARREL



Dissamble the assemble screw of the receiver.(screw1)

Dissamble the assemble screw of the receiver(screw2).

Remove the barrel slowly.



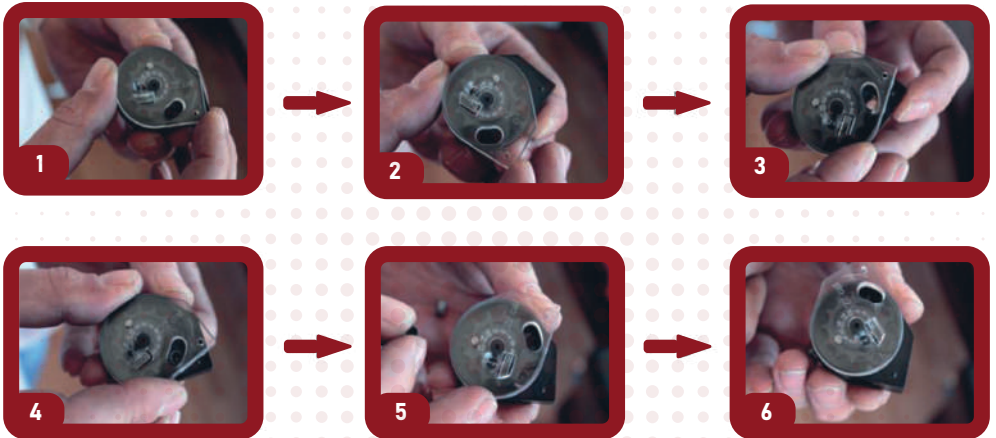
Barrel tightness o rings are three totatly and 2 of them are outside (②) (③) while 1 inside. (①). Incase of deformation , please replace with the spare o.rings that are available inside the packaging.



KRAL ARMS

FILLING THE MAGAZINE

Rotate the idle front cover in the direction of the arrow (clockwise).



Once the glass cover hits are last point, prevent the pushing force of the spring and switch the Pellet to first bed(see picture 4).Once the first pellet prevents the rotation of the inner turret, move the glass cover on the contrary direction and fill the turret.

Note: It will prevent the assembly of turret system, do not force.
To watch the video, please visit www.kralarms.com



KRAL ARMS

MECHANISM PARTS AND PART NUMBERS

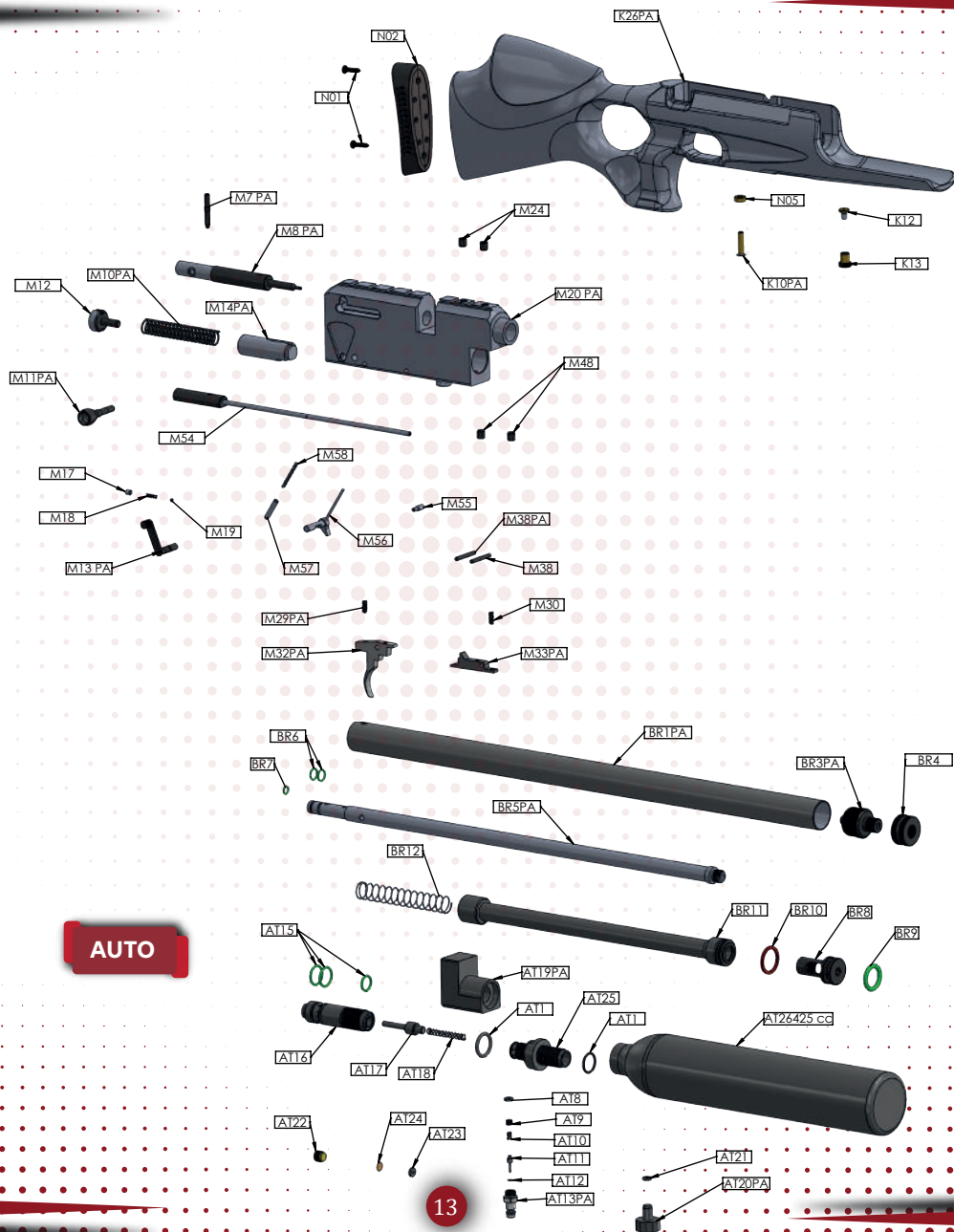
EKINOKS

K1	Butt Pad	M51	Loading Part Trigger Nut
K2	Butt Pad Fixing Part	M52	Loading Part Trigger Pin
K3	Stock Fixing Body	M54	Piston Wire
K6	Butt Pad Button Spring	M55	Selector Movement Screw
K7	Butt Pad Button	M56	Selector
K8	Cheek Piece Fixing Set Screw Part	M57	Selector Socket
K9	Stock Fixing Screw Cover	M58	Selector Spring
KP9	Fixing Set Screw	BR1EK	Shroud Barrel
K10	Stock Fixing Screw	BR3EK	Shroud Centering Part
K11	Pulley	BR4EK	Shroud Centering Nut
K12	Picatinny Assemble Nut	BR5EK	Barrel
K13	Picatinny Assemble Screw	BR6	Barrel Outer O-ring
K25	Wood Stock	BR7	Barrel Inner O-ring
N01	Butt Pad Fixing Screw	BR8	Air Transformation Part
K1	Butt Pad	BR9	Air Transformation Part O-Ring
K2	Butt Pad Button Part	BR10	Piston O-Ring
K6	Butt Pad Button Spring	BR11	Piston
K7	Butt Pad Button	BR12	Piston Spring
K10	Stock fixing Screw	AT1	Tube Front Valve Block O-ring
K11	Pulley	AT8	Filling Port Lower O-Ring
K12	Picatinny Assemble Screw	AT9	Filling Port Set-Screw
K13	Picatinny Assemble Nut	AT10	Filling Port Spring
KP3	Butt Pad Fixing Part	AT11	Filling Port Valve
K25S	Synthetic Stock	AT12	Filling Port Valve O-Ring
KP5	Cheek Piece Adjustable Nut	AT13	Filling Port
KP6	Cheek Piece Adjustable Screw	AT15	Valve Block O-Rings
KP7	Cheek Piece	AT16	Valve Block
KP8	Cheek Piece Adjustable Cover	AT17	Long Valve
KP9	Fixing Set Screw	AT18	Long Valve Spring
M7EK	Connecting Pin	AT19EK	Valve Block
M8EK	Needle	AT20EK	Manometer
M10EK	Hammer Spring	AT21	Manometer Lower O-Ring
M11EK	Cocking Lever	AT22	Safety FixinG Part
M12	Hammer Adjustment Screw	AT23	Safety Lower O-Ring
M13EK	Safety	AT24	Safety pulley
M14EK	Hammer	AT25	Connecting Block
M17	Safety Set-Screw	AT26	425 Air Tube
M18	Safety Spring	P01EK	Picatinny
M19	Safety Ball	P02EK	Picatinny Fixing Screw
M20EK	Receiver	P03EK	Picatinny Block Fixing Screw
M24	Barrel Fixing Set-Screw	P04EK	Pulley
M29EK	Trigger Spring	P05EK	Spring
M30EK	Inner Hammer Spring	P06EK	Folding Stock Connecting Pin
M32EK	Inner Trigger	P07EK	Trigger Wire
M33EK	Inner Hammer	P09EK	Trigger Wire Fixing Pin
M38	Trigger Group Fixing Pin	P10EK	Trigger Picatinny Fixing Pin
M39EK	Inner Trigger Short Pin	P11EK	Trigger Screw
M48	Valve Block Fixing Set-Screw	P12EK	Trigger Screw Nut
M49	Loading Part Trigger Fixing Screw	P13EK	Trigger
M50	Loading Part Trigger	P14EK	Trigger



KRAL ARMS

MECHANISM PARTS AND PART NUMBERS



AUTO



KRAL ARMS

MECHANISM PARTS AND PART NUMBERS

AUTO

N01	Butt Pad Screw	M58	Selecter Spring
N02	Butt Pad	BR1PA	Shroud Barrel
N05	Receiver Fixing Pulley	BR3PA	Shroud Centering Part
K10PA	Stock fixing screw	BR4	Shroud Centering Nut
K12	Picatinny Assemble Nut	BR5PA	Barrel
K13	Picatinny Assemble Screw	BR6	Barrel Outer O-ring
K26PA	Wood Stock	BR7	Barrel Inner O-ring
M7PA	Connecting Pin	BR8	Air Transformation Part
M8PA	Needle	BR9	Air Transformation O-Ring
M10PA	Hammer Spring	BR10	Piston O-Ring
M11PA	Cocking Lever	BR11	Piston
M12	Hammer Adjustment Screw	BR12	Piston Spring
M13PA	Safety	AT1	Tube Front Valve Block O-Ring
M14PA	Hammer	AT8	Filling Port Lower O-Ring
M17	Safety Set-Screw	AT9	Filling Port Set-Screw
M18	Safety Spring	AT10	Filling Port Spring
M19	Safety Ball	AT11	Filling Port Valve
M20PA	Receiver	AT12	Filling Port Valve O-Ring
M24	Barrel Fixing Set-Screw	AT13PA	Filling Port
M29PA	Trigger Spring	AT15	Valve Block O-rings
M30	Inner Hammer Spring	AT16	Valve Block
M32PA	Inner Trigger	AT17	Long Valve
M33PA	Inner Hammer	AT18	Long Valve Spring
M38PA	Trigger Group Fixing Pin	AT19PA	Valve Block
M38	Trigger Short Pin	AT20PA	Manometer
M48	Valve Block Fixing Set-Screw	AT21	Manometer Lower O-Ring
M54	Piston Wire	AT22	Safety Fixing Part
M55	Selecter Movement Screw	AT23	Safety Lower O-Ring
M56	Selecter	AT24	Safety pulley
M57	Selecter Socket	AT25	Connecting Block
		AT26	425 Air Tube



KRAL ARMS

PRODUCT

Type : _____

Brand : _____

Model : _____

Serial : _____

Caliber : _____

Barrel Length : _____

Title : _____

Address : _____

Tel : _____

Invoice Date : _____

Invoice Number : _____

Signature : _____

Delivery Date and Location : _____

Maximum Date Time : 20 Days

Warranty Period : 2 Years

WARRANTY CERTIFICATE



KRAL ARMS

CUSTOMER

Name : _____

Surname : _____

Address : _____

Tel : _____

ID : _____

Producer / Importer Company

KRAL ARMS

Tel: 0332 524 68 70 Px : 0332 524 68 71

www.kralarms.com

P.K. 42720 - Beyşehir/KONYA



KRAL ARMS



+90332 524 68 70



+90332 524 68 71



export@kralarms.com



www.kralarms.com



42720 - Beyşehir / KONYA

