



# KRAL ARMS

## KP12

### USER MANUAL

12Ga Semi Automatic / Pump Shotgun

**READ CAREFULLY BEFORE USING THIS FIREARM IMPORTANT!**

Do not discard! Keep this manual with your rifle. It should accompany the rifle to any new owner.

[www.kralarms.com](http://www.kralarms.com)





|  |       |
|--|-------|
| Welcome to Kral Arms Family.....                       | 2     |
| About Your Rifle.....                                  | 3     |
| About The Use Of Cartridges.....                       | 4     |
| Don't Forget .....                                     | 5     |
| Maintenance/Disassembly and Assembly .....             | 6-7-8 |
| Loading & Easy Loading of Rifle .....                  | 9     |
| Action Selection.....                                  | 10    |
| Cleaning / Maintenance / Lubrication of the Rifle..... | 11    |
| Mobile Choke .....                                     | 12    |
| Mobile Choke Usage .....                               | 13    |
| Size Of The Stock That Suits You .....                 | 14    |
| Basic Safety Rule .....                                | 15    |
| Packed Weapon Assembly.....                            | 16    |
| Mechanism Group .....                                  | 17    |
| Trigger Group .....                                    | 18    |
| Safety Group.....                                      | 18    |

## Welcome to Kral Arms Family

A KP12 user, we would like you to know that we are happy to see you in this big family, you will now be able to benefit from the service that this family has benefited from for years, at the same time, by considering this manual prepared for you as an integral part of your rifle and taking care of the instructions in it, you will be able to enjoy peace and confidence for generations.

you'll be able to use your rifle inside.

Using and maintaining your rifle in accordance with the information given in the instruction booklet will enable you to use your rifle without any problems and with confidence. Even if you have completed the warranty period, we would like you to share the problems in your rifle with us or to send us all kinds of wishes and complaints while being together during the hunting festivals organised every year in various provinces and districts of Turkey, because we know your rifle best after you and we want to take care of it. For this request, we would like you to know that our after-sales teams are waiting for you to help you and answer your problems



**Note :** This user manual is intended to cover all KP12 models. You may also find hardware descriptions and features that do not belong to your rifle. The information and details contained in this manual are valid for the period of printing, however "KRAL SILAH SAN." reserves the right to change or cancel the details of its models at any time without any warning or obligation.



The barrel of your rifle is made of Turkish steel material that meets Kral Arms quality standards by automatic cnc machines. Designed and tested to meet all C.I.P. and S.A.A.M.I. standards.

### **Your Rifle's Privileges;**

All welding processes of your rifle (all parts of the barrel) are welded with silver metal in a homogenised tunnel system. The body of your rifle has T6 pi aluminium values used in the aviation industry.

You can drop the needle of your rifle as you wish, because we produce it from valadium material. We use Polymer and glass fibre additive materials in all our synthetic products.

We cover your rifle with the best coating materials against corrosion and pack it to serve you for generations. With the red Phosphor on the rear sight of your rifle, you have the privilege of aiming at night in darkness and hazy weather conditions. All That remains is to use your rifle safely and to apply the maintenance details written in this manual while using it.

The total weight of your rifle is 3,25 Kg.



## About The Use Of Cartridges

The only cartridges you can use for your KP12 rifle are 65, 70 and 76 mm (2.1/2, 2.3/4 and 3 inch) cartridges.

The main factors that affect the performance of your rifle positively or negatively;

- Invoiced section that fixes the cartridge in the firing chamber
- Dimensions related to the external form of the cartridge, closure quality
- ° Hardness of the Detonation Capsule
- Moisture content of gunpowder
- Accuracy of the weight information on the pack
- Sealing of the plug
- More than one used cartridge case
- The quality of metal and plastic used in general (Your rifle will not work with so-called paper-type cartridge groups)
- In order to eliminate the above factors in a positive way, we recommend that you always use the brand that you are sure of its reliability and quality.
- Make sure that the cartridge you purchase has the C.I.P. logo on the box. We manufacture according to the C.I.P. standards accepted by European firearm and cartridge manufacturers, so you will minimise the risk of problems by operating your weapon at optimum performance. The cartridge you use must have the maximum pressure value written on it, this value is 1050 bar for 65, 70 and 76 mm (2.1/2, 2.3/4 and 3 inch) cartridges and these values are suitable for your rifle.

Reminder : We remind you once again that you should pay attention to all of the reminders, advice and warning notes throughout this booklet.



## DON'T FORGET

- Be careful not to go hunting alone.
- Get into the habit of carrying and using your rifle without a strap.
- Never attempt to jump over ditches, fences or similar places with a loaded weapon.
- When crossing ditches, fences or similar places, remove the cartridges from your rifle and cross with the mechanism open.
- In wet weather, make sure that rain or snow does not enter the barrel.
- Do not buy and use cartridges from people you do not know during hunting.
- Take the necessary safety precautions when loading your rifle during hunting.
- On your hunting walk, point your gun in a direction where there are no people.
- When closing your weapon after loading, hold it against the gap and close it slowly.
- Whichever hand you are used to carrying your rifle in at all times, make sure that you wear your household knife on the opposite side of your belt.
- For long hunts, use a loincloth instead of a vest to prevent sore shoulders.
- Try to balance the hunting equipment you intend to carry on you on a hunting day according to your body weight.
- When returning to your friends, discharge your weapon without warning.
- Approach other hunters with your weapon open.
- Unload the weapon at a safe distance where they can see it. The cocking handle of your automatic rifle must always remain open and visible.
- Always check the inside of the barrel when reloading and after the firing.
- During a hunting walk, the barrel of your rifle should always be pointing upwards.
- When hunting, be careful not to violate the hunter's line.
- You never put a banner on an unfamiliar game animal during its take-off.
- You never shot at the prey that took off towards the other hunters.
- You certainly didn't make a salary in the direction you didn't see the back.
- Do not shoot at water, ice, rocks, stones and similar surfaces where pellets or bullets may ricochet.
- Never place your weapon upright, even if it is unloaded.
- You never made a poster after drinking alcohol.
- Store the captured game animals according to the seasonal conditions.
- Eviscerate and, if possible, salt domestic animals that you hunt in hot weather.



Keep the following warnings in mind!



# Maintenance

## Squeezing / Inserting Sequence



- 1) When you are sure that rifle is unloaded first switch the safety switch to the safe position (see picture -9-10 from Right to Left). Make sure that the barrel is clean and not too greasy. Unscrew the magazine nut of the rifle in the box together with the suspension strap (picture 1)
- 2) After removing the magazine nut, remove the handguard by applying a slight force in the forward direction (Picture 2)
- 3) Hold the barrel as shown in the picture and pull it in the opposite direction (Picture 3)

Caution : Your hand may get stuck and injured at every stage of this process..



5) In order to remove the mechanism of your rifle, first hold the cocking lever to the right as shown in the picture with your other hand, ensure that the curved cipher in the centre of the cocking lever channel of the mechanism and the cocking lever are in the same alignment and pull the cocking lever in the opposite direction. (Picture 5)

6) After you have completed the process of removing the cocking lever from the mechanism, all the group parts in the bolt handle will move in the forward direction with the effect of the action spring, and thus you will have the opportunity to remove the group parts at once as shown in the picture. (Picture 6)

Caution : You may be injured by the hammer you will use during this process.



7) In order to remove the trigger group, remove the trigger pin in the desired direction with the help of a pin and a hammer as shown in the picture. (Picture 7)

**CAUTION :** You may be injured by the hammer you will use during this process.

8) After removing the body pin, pull the trigger group forwards and then outwards by applying force as shown in the picture. (Picture 8)

**SAFETY  
BUTTON**



As shown in the picture, always keep your rifle as shown in the green ( marked picture) when hunting, cleaning, transporting and waiting. (Picture 9, 10)

## Safe Loading & Easy Setup of the Rifle



11) Insert the C.I.P. approved cartridge into the magazine well as shown in the picture and immediately push it into the receiver until you hear the sound of the locking tongue (Picture 11).

12) After loading the magazine, pull the button shown in the picture slightly towards you. You will notice that the cartridge falls on the lift. This button is also the system that allows you to easily remove the cartridge from the chamber during use (cut off). (Picture 12)

**ATTENTION: From this moment on, your weapon is ready to be fired. we will once again remind you of the safety rules.**

13) When you pull the cocking lever all the way back and release the cartridge waiting in the cartridge elevator as shown in the picture, observe that the elevator lifts the cartridge and moves with the mechanism towards the firing chamber and drives it into the firing chamber. (Picture 13)

HaGrlatma : The production quality of the cartridge used may cause this process to be incomplete, and even if the invoiced part of the cartridge, called the yellow side of the cartridge, is out of standards, your weapon may not be installed and the active safety systems associated with the carrier system may prevent the rifle from firing. Kral Arms always recommends the use of C.I.P. approved..

# Action Selection

This rifle can be fired in pump action or semi-automatic mode by simply rotating the latch ring on the front of the handguard. **PUMPED MODE** : To use in pump mode, remove the latch ring from the barrel ring by turning it clockwise. Pull the latch back to ensure the latch ring is in the correct position. (Picture 14) In this mode the handguard should also move backwards. (Picture 15)

**SEMI-AUTOMATIC MODE** : To switch to semi-automatic mode, turn the latch ring clockwise as far as it goes and release the latch release and it will turn clockwise and latch to the barrel ring. Make sure the handguard is locked for control purposes.



# Cleaning / Maintenance Lubrication of the Rifle

Cleaning is very important for your rifle to be long-lasting and not to cause you any problems in hunting or range shooting. We can easily observe that your rifle is contaminated with gunpowder soot after an average of 100 afsh (average value according to the quality of the gunpowder used in the cartridge). If cleaning is not done after the gunpowder soot combines with the protective oil, incompatible operation of the parts and its effects on the overall performance of the rifle can be observed and even boiling effect may occur in some parts. In order not to encounter such and similar situations, you should complete the cleaning / lubrication periods of your rifle after each hunt or every 6 months.

The oil you will use in cleaning must have protective and lubricating properties. Otherwise, your rifle will deform earlier during use and increase the risk of problems during firing.

Note : Although it has a high quality coating quality, the parts for corrosion in your wetland hunts, the mechanism and the mechanism drive button are parts that do not always need to be disassembled. You can wipe these parts superficially, observe their working condition while lubricating them and then clean them with compressed air without disassembling them. Dirt and lead plasters inside the barrel should be observed and cleaned regularly. In parallel with the quality of the cartridge used, the control should be carried out continuously. (Attention: This application is of vital importance for the user).

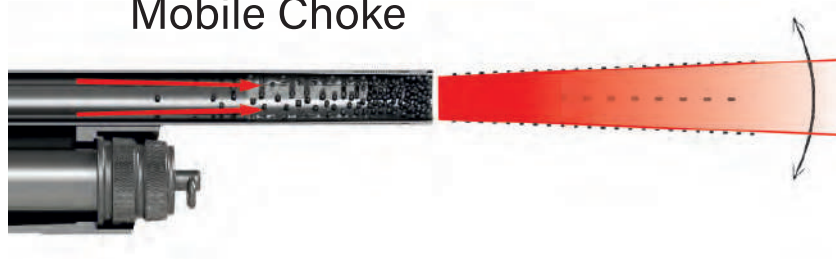
## Some Lubrication Examples

Cartridge Lifter Capsule Pin & Spring Cock Spring Capsule & Spring Mechanism Inside & Nail Mechanism Drive Button Oring Inside the Gas Chamber





## Mobile Choke



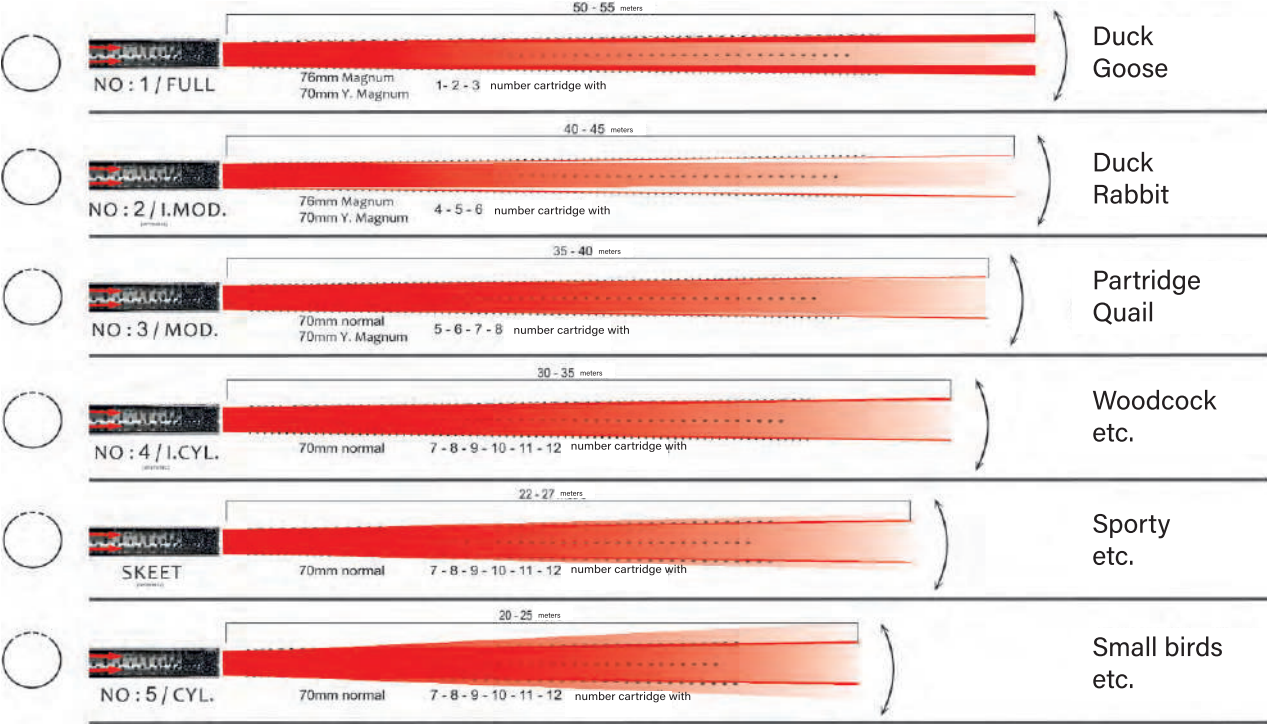
Mobile chokes are located at the end of your barrel and are changed with the help of the key in the box. All cartridges and shot groups have their own unique mobile choke number. These numbers symbolise the inner diameter of the shock and allow you to get maximum performance from your rifle in situations such as weather, cartridge and hunting distance. Kral Arms uses the longtube systems applied to the models to further increase the mobile shock performance, this system provides 20% more standard grouping of the pellets moving in the barrel (compared to the Kral Arms KP12 model), allowing more pellets to hit the target.

We recommend that you pay attention to the choke usage table on page 13. Do not shoot without a choke, this will cause the screw threads of the pellets to deform over time and the choke bed of your barrel to become unusable.

The shocks are coated with a hard surface coating against friction and corrosion. However, they must be removed and cleaned regularly, otherwise they may be difficult to replace in the future.

Shock; It is the most important element that ensures that the pellets are grouped in the most appropriate way and move to the target at a certain angle.

# Mobile Choke



## **Basic Safety Rule**

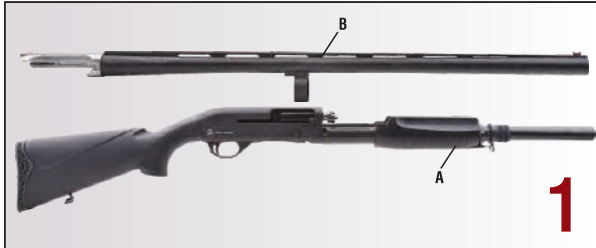
- 1) Check that your rifle is fully loaded before you start using it.
- 2) Always act as if your rifle is loaded.
- 3) Even if your rifle is unloaded, do not point it at anyone else or allow anyone else to point it at you.
- 4) Always carry your rifle with the barrel pointed in a safe direction.
- 5) Before shooting, make sure of your target and what is behind the target.
- 6) Never leave a loaded rifle in an easily accessible place.
- 7) The rifle must always be left in the safety.

Reminder : We remind you once again that you should pay attention to all of the reminders, advice and warning notes throughout this booklet.

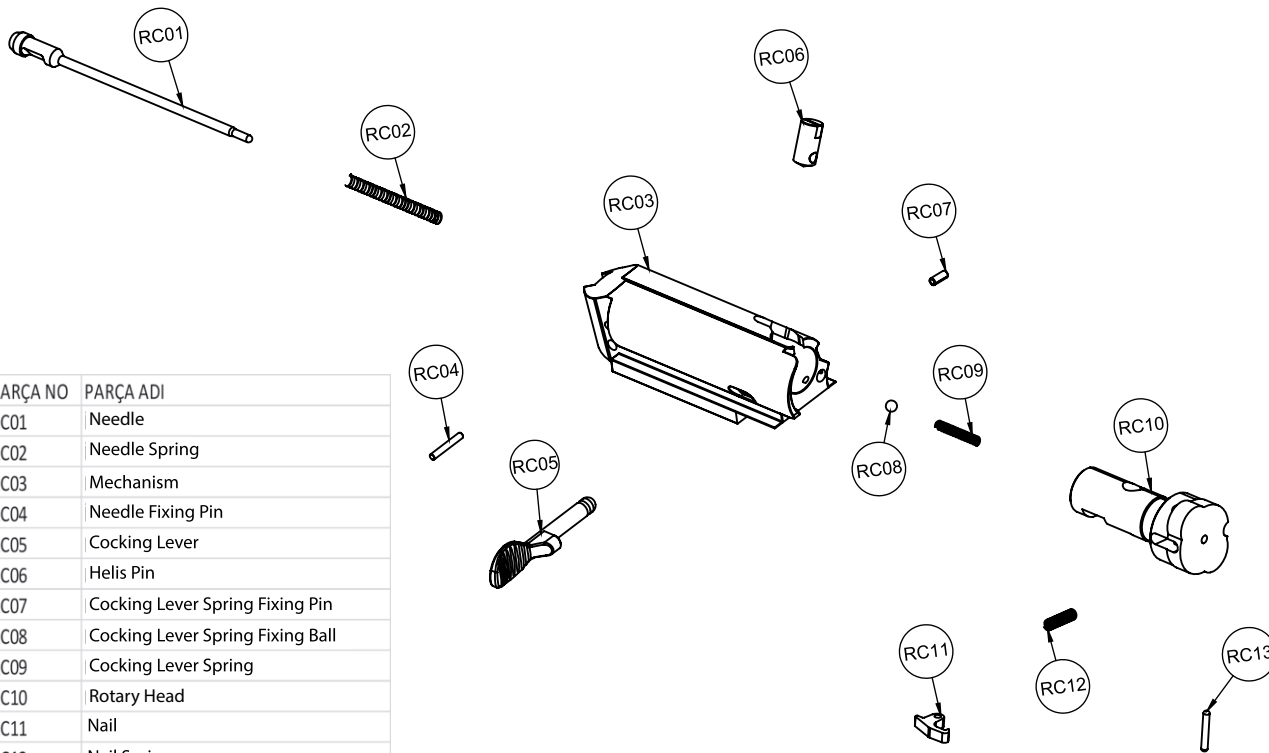
# Weapon Assembly

## Assembly Procedure

- 1) Loosen the Tightening Nut (Picture 3-4)
- 2) Remove the EI Stock by pushing it along the magazine tube (Picture 2)
- 3) Insert the barrel and cap block into the magazine tube ring and push it until it clicks into place (Picture 5)

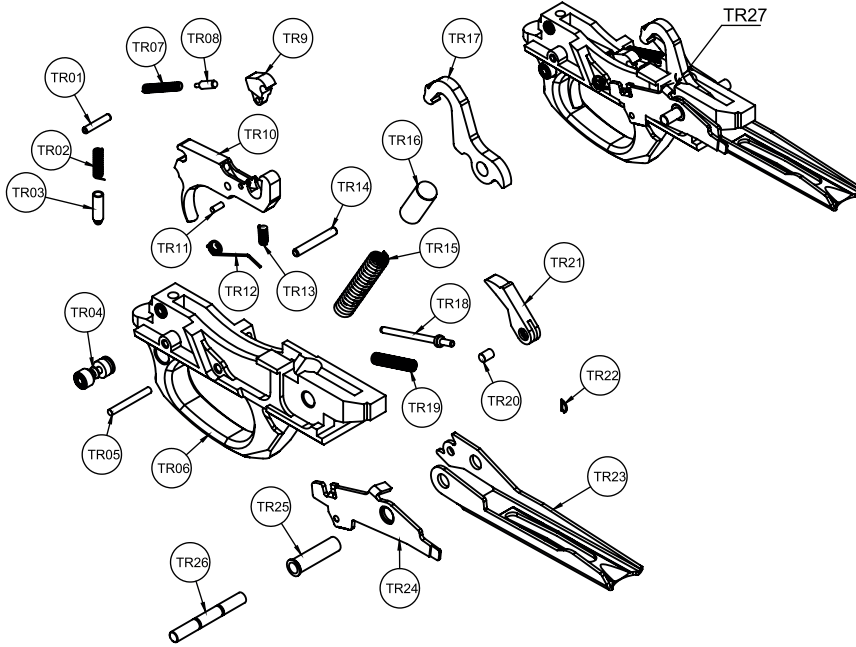


## Mechanism Group



| PARÇA NO | PARÇA ADI                        |
|----------|----------------------------------|
| RC01     | Needle                           |
| RC02     | Needle Spring                    |
| RC03     | Mechanism                        |
| RC04     | Needle Fixing Pin                |
| RC05     | Cocking Lever                    |
| RC06     | Helix Pin                        |
| RC07     | Cocking Lever Spring Fixing Pin  |
| RC08     | Cocking Lever Spring Fixing Ball |
| RC09     | Cocking Lever Spring             |
| RC10     | Rotary Head                      |
| RC11     | Nail                             |
| RC12     | Nail Spring                      |
| RC13     | Nail Fixing Spring               |

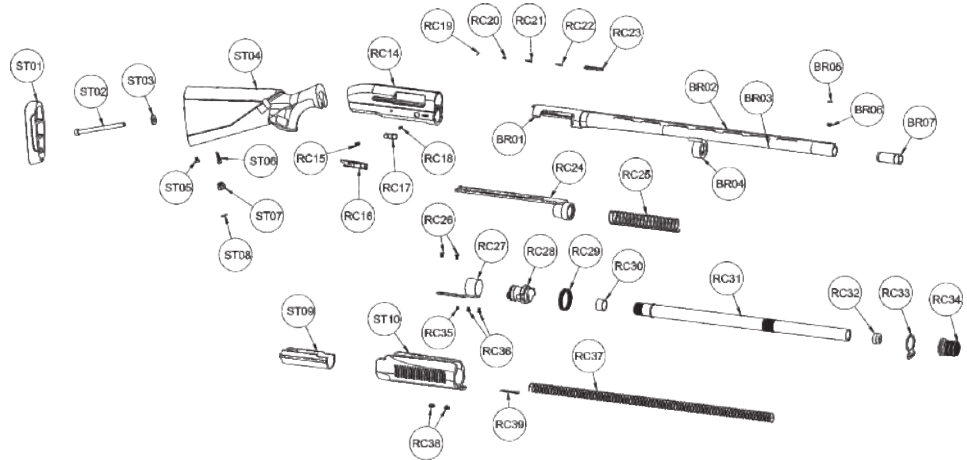
# Trigger Group



| TETİK GRUBU |                            |
|-------------|----------------------------|
| PARÇA NO    | PARÇA ADI                  |
| TR01        | Safety Fixing Part         |
| TR02        | Safety Spring              |
| TR03        | Safety Positioning Pin     |
| TR04        | Trigger Safety Pin         |
| TR05        | Trigger Fixing Safety Pin  |
| TR06        | Trigger Guard              |
| TR07        | Trigger Level Spring       |
| TR08        | Trigger Level Pin          |
| TR09        | Trigger Level              |
| TR10        | Trigger                    |
| TR11        | Trigger Level Pin          |
| TR12        | Side Sheet Spring          |
| TR13        | Trigger Lower Spring       |
| TR14        | Trigger Positioning Spring |
| TR15        | Hammer Stretch Spring      |
| TR16        | Stretch Spring             |
| TR17        | Hammer                     |
| TR18        | Cartridge Lever Pin        |
| TR19        | Cartridge Lever Spring     |
| TR20        | Cartridge Lever Pin        |
| TR21        | Cartridge Lever            |
| TR22        | Wire                       |
| TR23        | Carrier                    |
| TR24        | Side Sheet                 |
| TR25        | Carrier Jab Part           |
| TR26        | Receiver Fixing Part       |
| TR27        | Trigger Group              |

# Receiver Group

| PARÇA NO | PARÇA ADI                   |
|----------|-----------------------------|
| ST01     | Butt Pad                    |
| ST02     | Butt Fixing Screw           |
| ST03     | Pulley                      |
| ST04     | Butt                        |
| ST05     | Butt Pad Fixing Screw       |
| ST06     | Sviwel Fixing Screw         |
| ST07     | Sviwel                      |
| ST08     | Sviwel Fixing Pin           |
| ST09     | Stock Part                  |
| ST10     | Stock                       |
| RC14     | Receiver                    |
| RC15     | Body Side Sheet Spring      |
| RC16     | Body Side Sheet             |
| RC17     | Carrier Latch Button        |
| RC18     | Carrier Latch Button Spring |
| RC19     | Launcher Part Pin           |
| RC20     | Launcher Part               |
| RC21     | Launcher Pin Spring         |
| RC22     | Launcher Pin                |
| RC23     | Launcher                    |
| RC24     | Cocking Lever               |
| RC25     | Cocking Lever               |
| RC26     | Grip Lock Part Spring       |
| RC27     | Grip Lock Part              |
| RC28     | Butterfly Lock              |
| RC29     | Butterfly Lock Spring       |
| RC30     | Magazine Pipe Cover         |
| RC31     | Magazine Pipe               |
| RC32     | Magazine Pipe Stopper       |
| RC33     | Sviwel                      |
| RC34     | Grip Nut                    |
| RC35     | Lock Set-Screw              |
| RC36     | Lock Screws                 |
| RC37     | Magazine Pipe Spring        |
| RC38     | Grip Lock Part Nut          |
| RC39     | Lock Sheet                  |
| BR01     | Barrel Extension            |
| BR02     | Barrel Upper                |
| BR03     | Barrel                      |
| BR04     | Barrel Ring                 |
| BR05     | Front Sight Phosphorus      |
| BR06     | Front Sight                 |
| BR07     | Mobile Choke                |





For international dealers please visit:  
[www.kralarms.com](http://www.kralarms.com)

Follow Us on:

